

Town of Natick Residential Waste & Recycling Audit

Presented September 17, 2018



RSE USA

Study Overview

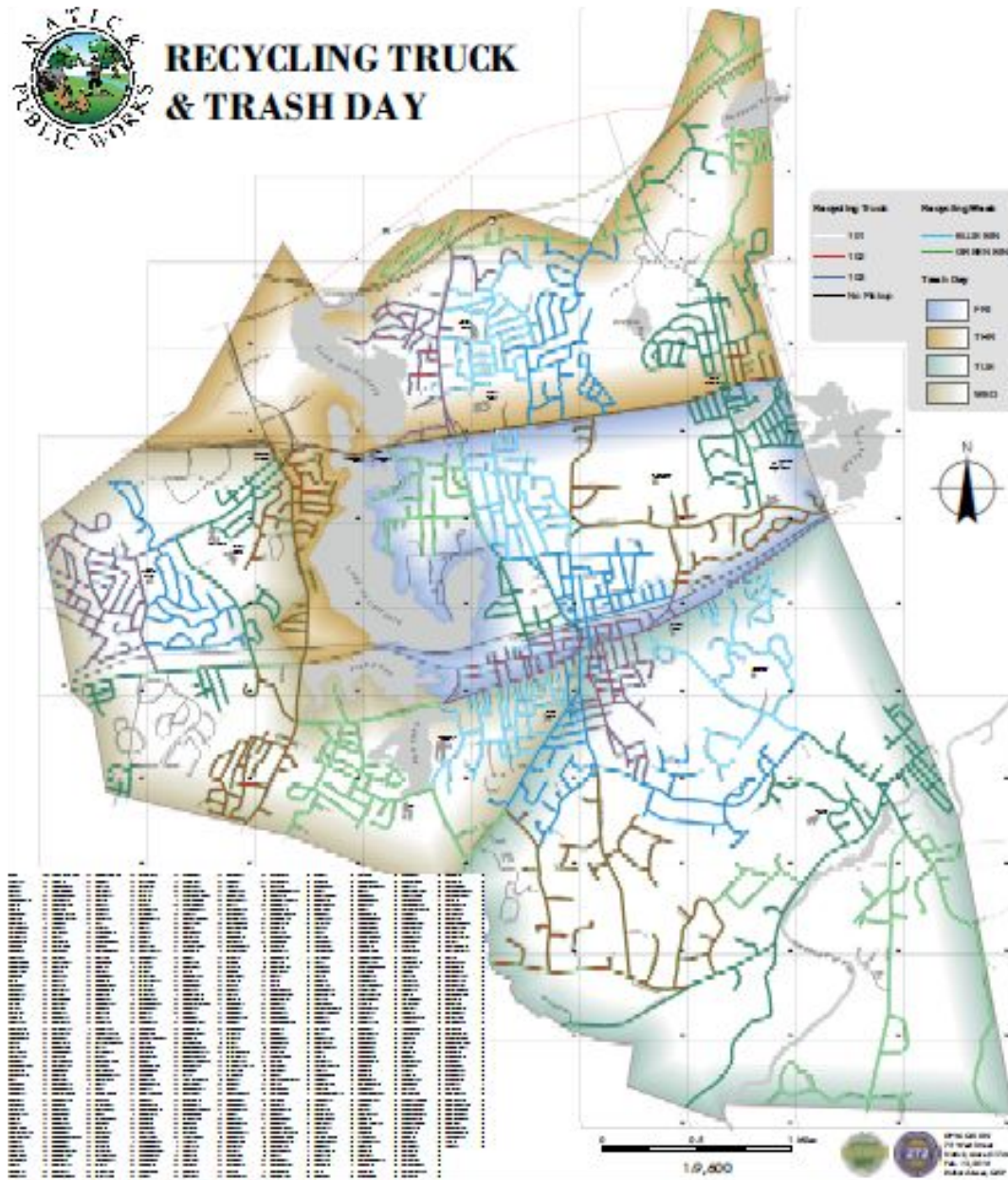
- 50 HH per Route
- Route 101, Tuesday, Wednesday, Thursday Routes
- Two-Week Study: June 12 – 14 and June 19 – 21
- Funded through MassDEP Recycling Dividends Grant



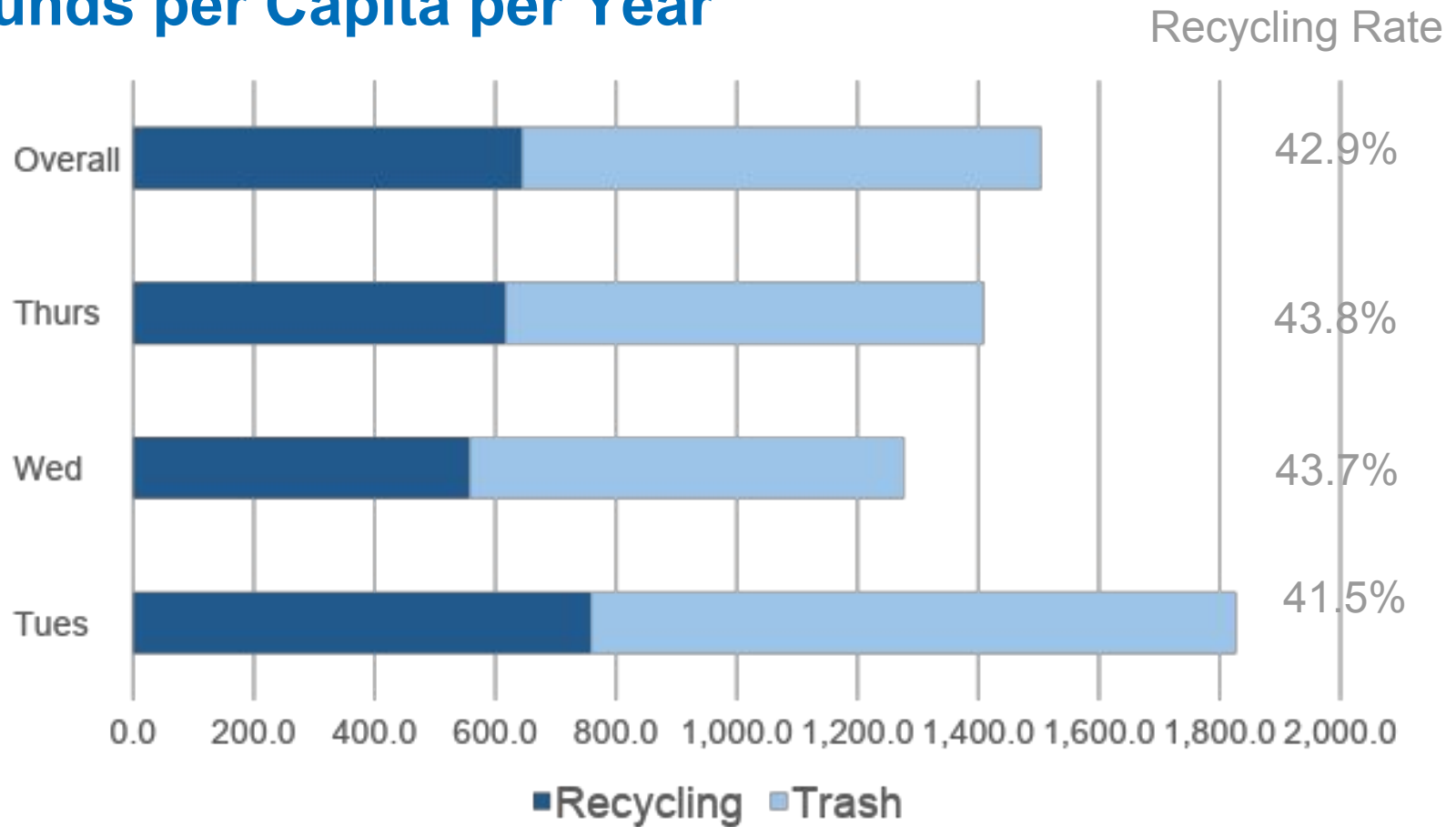
Study Limitations

- Ignored yard trimmings
- Excluded food waste pilot homes
- Excluded Simple Recycling (pink bags)
- Seasonality
- Ignores drop-off recycling





Broad Results Pounds per Capita per Year

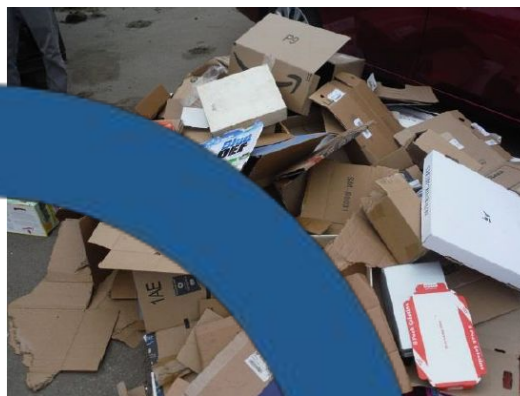


Key Statistics

- Setout Rate – 86% -- Relatively high
- Contamination Rate – 14.3% -- Relatively low
- Compostable Organics – 41.2% of Trash Weight
- Disposed Recyclables:
 - 12.6% of trash during non-recyclable week
 - 11.6% of trash during recyclable week
- Bags Used – 55.0 per HH per Year- ½ small, ½ large

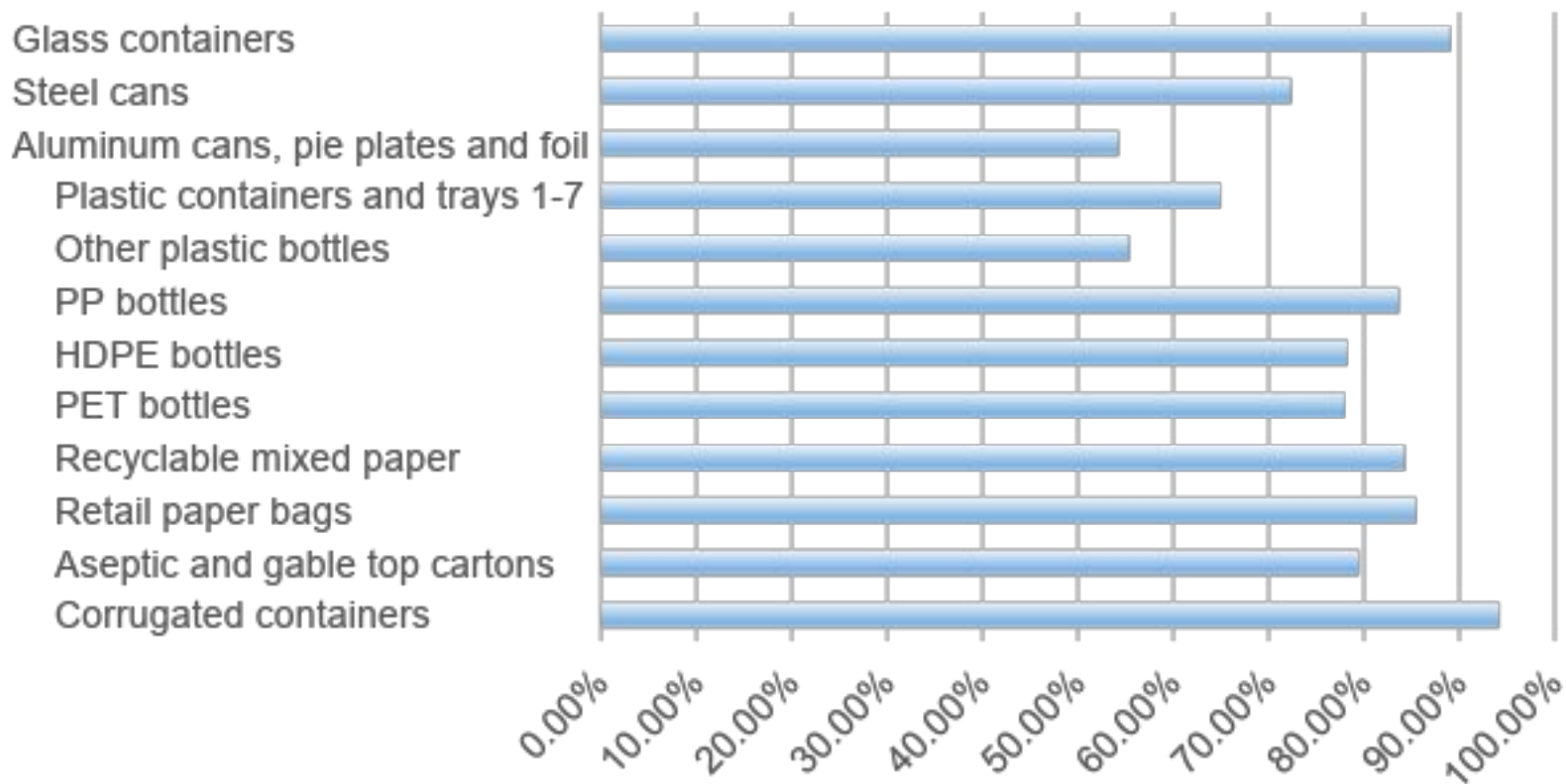


What's in Recycling?



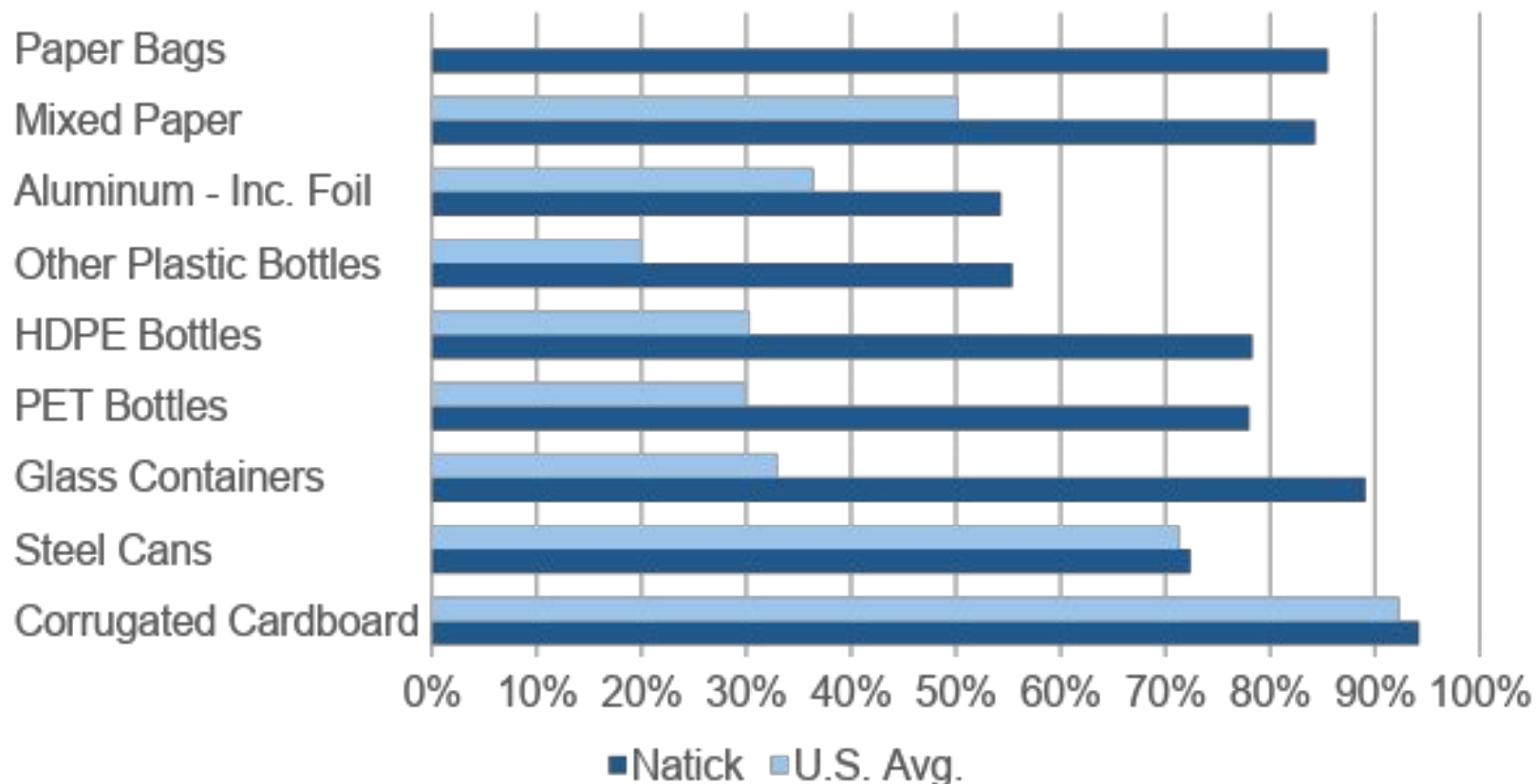
- Paper
- Plastics
- Aluminum cans, pie plates and foil
- Steel cans
- Glass containers
- Organics
- Textiles
- HHW
- Other

Capture Rates – Natick Sort Results

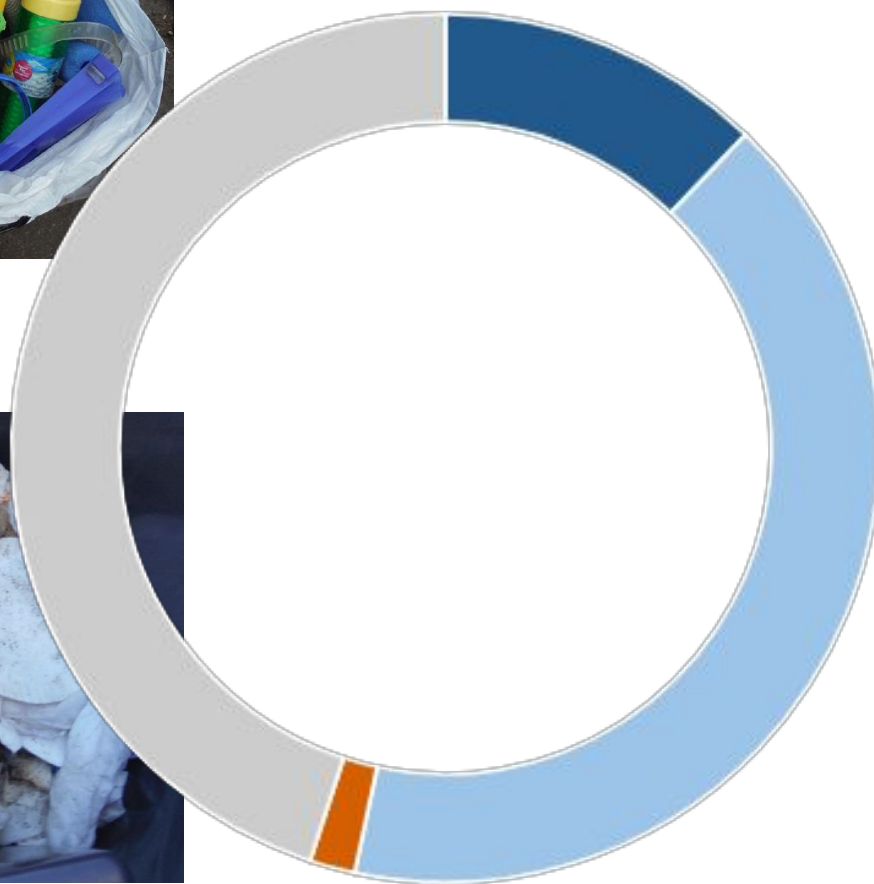


Comparison to US Average Capture Rates

Note – U.S. Includes ALL MSW Sources



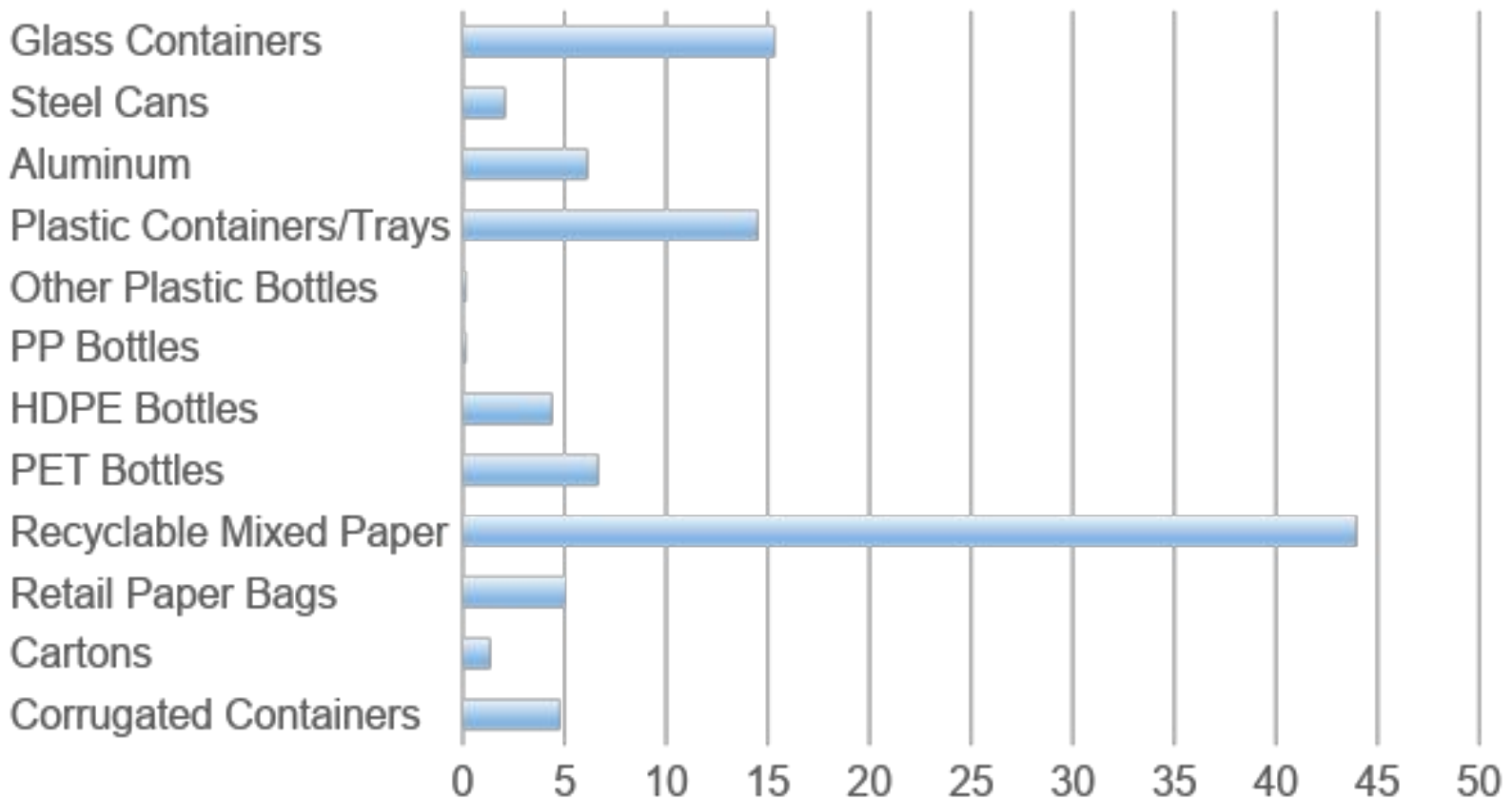
What's in the Trash?



- Recyclables
- Organics
- Textiles
- Other

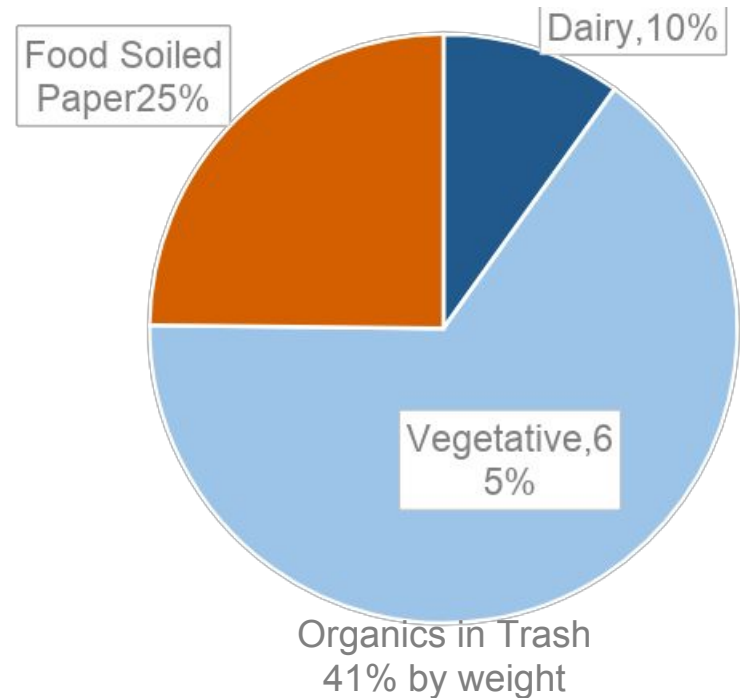
Recyclables in Trash

Pounds per Household per Year



Findings and Recommendations

- Community behaves in a relatively homogenous way
- Composition of compostables – mostly vegetative
- Every-other-week recycling does not seem to be impacting ability to recycle
- Consider identifying and conducting targeted outreach to households that currently do not recycle



Findings and Recommendations, Continued

- Consider expanding the town's food scrap collection program, and/or encouraging backyard composting.
- Targeting organics could greatly reduce disposal, by weight – 41%



Findings and Recommendations, Continued

- Expand education/outreach about how to manage the following materials:
 - Textiles
 - Batteries
 - Electronics
 - Film plastics
 - Expanded polystyrene
 - Large plastic goods



Questions?

