

Change Request	Item Number	Item Name
CR-144	1.102	Reach In Undercounter Refrigerator
CR-109	1.108	Millwork
CR-203	1.110	Dual Temp Food Well, Drop-In
CR-203	1.111	Cold Food Well Unit, Drop-In, Refrigerated
CR-339	1.112	Drop-In Refrigerated Merchandiser
CR-161	1.201	Millwork
CR-132	1.203	Fire Deck Oven, Gas
CR-333	1.207	ZGUARD
CR-339	1.208	Heated Shelf Food Warmer
CR-203	1.303	Dual Temp Food Well, Drop-In
CR-203	1.305	Dual Temp Food Well, Drop-In
CR-144	1.316	HD Range, 24", Open Burners
CR-339	1.319	Capture-Jet Hood
CR-144	1.323	HD Range, 18", 2 Open Burners
CR-203	1.403	Dual Temp Food Well, Drop-In
CR-203	1.405	Dual Temp Food Well, Drop-In
CR-144	1.412	Blast Chiller/Shock Freezer, Reach-In
CR-144	1.413	Coffee Brewer
CR-144	1.414	Coffee Dispenser
CR-072	1.502	Millwork
CR-161	1.502	Millwork
CR-139	1.503	ZGUARD
CR-203	1.504	Cold Food Well Unit, Drop-In, Refrigerated
CR-144	1.504	Cold Food Well Unit, Drop-In, Refrigerated
CR-072	1.507	Millwork
CR-161	1.507	Millwork
CR-139	1.508	ZGUARD
CR-203	1.510	Dual Temp Food Well, Drop-In
CR-339	1.601	Millwork
CR-109	1.601	Millwork
CR-120	1.606	Display Freezer
CR-120	1.701	Millwork
CR-161	1.701	Millwork
CR-144	1.706	Reach In Undercounter Refrigerator
CR-120	1.708	Countertop Freezer
CR-266	1.709	Millwork
CR-266	1.709	Millwork
CR-072	1.709	Millwork
CR-339	1.709	Millwork
CR-144	1.711	Refrigerated Display Case
CR-120	1.712	Reach In Undercounter Refrigerator
CR-144	1.712	Reach In Undercounter Refrigerator
CR-266	1.718	Back Bar Cooler
CR-144	1.718	Back Bar Cooler
CR-203	1.718	Back Bar Cooler
CR-120	1.719	Reach In Undercounter Refrigerator

CR-144	1.719	Reach In Undercounter Refrigerator
CR-072	1.720	Millwork
CR-266	1.720	Millwork
CR-266	1.721	Beer Tap
CR-120	1.723	Work Counter
CR-266	1.723	Work Counter
CR-266	1.724	Drip Trough
CR-266	1.725	Beer Power Rack and Installation
CR-144	1.813	Water Filtration System
CR-123	1.901	Millwork
CR-120	1.901	Millwork
CR-180	1.901	Millwork
CR-120	1.902	ZGUARD
CR-144	1.904	Reach In Undercounter Refrigerator
CR-120	1.904	Reach In Undercounter Refrigerator
CR-120	1.905	Heated Low Temp Holding Cabinet
CR-123	1.909	Millwork
CR-120	1.909	Millwork
CR-123	1.911	Millwork
CR-120	1.911	Millwork
CR-120	1.912	Heated Shelf Food Warmer
CR-120	1.913	Drop-In Hot Well
CR-120	1.914	Drop-In Frost Top
CR-120	1.914	Drop-In Frost Top
CR-203	2.115	Ref. Rack
CT-031	2.115	Ref. Rack
CR-144	2.312	Water Filtration System
CR-339	2.313	Fryer
CR-144	2.313	Fryer
CR-144	2.315	Millwork
CR-284	2.401	Ice Machine
CR-144	2.409	Water Filtration System
CR-161	2.410	Millwork
CR-203	1.504A	Cold Food Well Unit, Drop-In, Refrigerate
CR-339	1.709.1	Juicer
CR-144	1.813.1	Water Filtration System, Cartridge
CR-339	2.302A/B	Capture-Jet Hood
CR-144	2.312.1	Water Filtration System, Cartridge
CR-144	2.409.1	Water Filtration System, Cartridge

From Consigli Finalized Total of Changes

CONTINUATION SHEET

COMPANY NAME: BOSTON SHOWCASE COMPANY

A	B	
Outstanding CO Request Date	Request Description	SUBCONTRACTOR
December 20, 2016	BSC COR #14001 / Changes per Addendum #5 Items 1.315 / 1.604 / 1.718 and 1.903	
February 10, 2017	BSC COR #14002 / Changes per Addendum #5 Items 1.502 / 1.507 / 1.709 and 1.720	
February 17, 2017	BSC COR #14003 / Bulletin #39 Changes REVISED ON 8/14/2017	
March 1, 2017	BSC COR #14004 / Bulletin #38 Counter Changes	
March 1, 2017	BSC COR #14005 / Item #1.604 New EPA Regulations	
March 6, 2017	BSC COR #14006 / Bulletin #28 Changes REVISED ON 8/11/2017	
March 21, 2017	BSC COR #14007 / RFI #506 - Revise Woodstone Over	
March 29, 2017	BSC COR #14008/Item #1.508 Add Heat to Sneezegua	
April 14, 2017	BSC COR #14009 / Cutbook Comments & RFI #574	
May 24, 2017	BSC COR #14010 / Drawings Revs to Front/Back of Ho	
June 5, 2017	BSC COR #14011 / Changes to Cashier Counter	
June 19, 2017	BSC COR #14012R / Add Item 1.709 Santos Juicer	
June 16, 2017	BSC COR #14013 / Add'l Hood Materials	
October 26, 2017	BSC COR #14014R / Bulletin #37.1 - Add Counters	
September 12, 2017	BSC COR #14015 / Bulletin #37.1 - Delete Item 1.901	
September 14, 2017	BSC COR #14016 / Add Floor to Walk-In	

November 14, 2017	BSC COR #14017 Rev #2 / Revised Refrigeration/AMC
October 5, 2017	BSC COR #14018 / Changes to PI Bar
December 4, 2017	BSC COR #14019 / Install Items 1.720 and 1.723 at lat
December 11, 2017	BSC COR #14020 / Modify Item 1.709 Service Counter
January 10, 2018	BSC COR #14021 / F&I Ansul System for Woodstone C
January 18, 2018	BSC COR #14022 / Beer Revision
March 1, 2018	BSC COR #14023 / Item #2.401 - Change Ice Machine
March 15, 2018	BSC COR #14024 / Supply 3 VFD's for Hood Fan Cont
April 4, 2018	BSC COR #14025 / Revised BBQ Counter
April 4, 2018	BSC COR #14026 / Change in Sneeze Guards
April 17, 2018	BSC COR #14027 / Supply Alta Pipe Chase Housing
May 8, 2018	BSC COR #14028 / Overtime Work
May 10, 2018	BSC COR #14029 / Splash Guards & Posi Sets for Ran
May 16, 2018	BSC COR #14030 / Supply 2 New Air Screens
May 23, 2018	BSC COR #14031 / Return Refrigerator / Freezer
May 25, 2018	BSC COR #14032 / Solenoid Valves & Temp Controls
May 31, 2018	BSC COR #14033 / 96" Wall Caps in lieu of Corner Gu
May 31, 2018	BSC COR #14034 / F&I Telescopic Window Frame
May 31, 2018	BSC COR #14035 / Bulletin #85 - F&I Trim for Shelf
May 31, 2018	BSC COR #14036 / Overtime Refrigeration Work
June 4, 2018	BSC COR #14037 / Cold Pans (no cost w/ this COR)
June 12, 2018	BSC COR #14038 / Trim Extras
June 27, 2018	BSC COR #14039 / Furnish & Install New Glass

June 25, 2018	BSC COR #14040 / Furnish Trim to Fill in 1" Gap	
June 25, 2018	BSC COR #14041 / Furnish & Install S/S Cove Base	
September 27, 2018	BSC COR #14042 R / Item #1.901 Corian to Stainless S	
September 24, 2018	BSC COR #14043 / Supply ZoomLock Connections	
September 25, 2018	BSC COR #14044 / PI Bar Replacement Wood	
September 25, 2018	BSC COR #14045 / Credit to Not Supply/Install Backsp	
TOTALS		

Item Details	Quantity	Unit Cost
Delfield Model No. UC4048	1	\$ 1,368
SML Stainless Steel	1	\$ 4,186
Low Temp Industries Model No. QSCHP-2	1	\$ 683
Low Temp Industries Model No. DI-2063TA	1	\$ 3,424
RPI Industries Model No. VIAS2-27-R-SQ-SC-INS	1	\$ 4,125
SML Stainless Steel	1	\$ 233
Wood Stone Model No. FD-9660-RFGLR-IR	1	\$ 1,898
BSI Model No. ZG9930	1	\$ 2,996
Hatco Model No. GRSBF-48-S	1	\$ 1,210
Low Temp Industries Model No. QSCHP-2	1	\$ 683
Low Temp Industries Model No. QSCHP-3	1	\$ 175
Jade Range Model No. JTRH-4-A	1	\$ 320
Halton Model No. Q-KVE-SJ	1	\$ 5,748
Jade Range Model No. JTRH-2	1	\$ 580
Low Temp Industries Model No. QSCHP-2	1	\$ 683
Low Temp Industries Model No. QSCHP-3	1	\$ 175
Irinex USA Model No. MF 70.1L-MYA	1	\$ 348
Fetco Model No. CBS-52H-15	1	\$ (1,983)
Fetco Model No. D049	1	\$ (3,132)
SML Stainless Steel - Salad Bar	1	\$ 12,447
SML Stainless Steel - Salad Bar	1	\$ 5,452
BSI Model No. ZG9930	1	\$ (3,120)
Low Temp Industries Model No. DI-2063TA	1	\$ 3,778
Low Temp Industries Model No. DI-2063TA	1	\$ (276)
SML Stainless Steel - Hot Entrée Bar & Soup	1	\$ 12,447
SML Stainless Steel - Hot Entrée Bar & Soup	1	\$ 4,575
BSI Model No. ZG9930	1	\$ (1,502)
Low Temp Industries Model No. QSCHP-2	1	\$ 1,586
SML Stainless Steel - Cashier Stand	1	\$ 10,635
SML Stainless Steel - Cashier Stand	1	\$ 7,002
True #STR1F-2HG Display Freezer	1	\$ 9,898
SML Stainless Steel	1	\$ 1,990
SML Stainless Steel	1	\$ 1,823
Delfield Model No. UC4048	1	\$ 1,368
Beverage Air #CF3-1-W	1	\$ 2,576
SML Stainless Steel	1	\$ 8,778
SML Stainless Steel	1	\$ 3,961
SML Stainless Steel	1	\$ 2,803
SML Stainless Steel	1	\$ (32,883)
RPI Industries Model No. VIAS3-34-R-SQ-SC-IS	1	\$ 14,982
Delfield Model No. 407	1	\$ 2,242
Delfield Model No. 407	1	\$ 398
Glastender BB84RH	1	\$ 5,890
Glastender BB84RH	1	\$ 276
Glastender BB84RH	1	\$ (3,043)
Delfield #GUF32P-D	1	\$ 645

Delfield #GUF32P-D	1	\$ 398
SML Stainless Steel - Beer/Wine	1	\$ 9,268
SML Stainless Steel - Beer/Wine	1	\$ 2,140
Glastender Model No. CUSTOM	1	\$ (2,138)
New	1	\$ 4,860
New	1	\$ 2,140
Drip Trough	1	\$ 492
Beer Power Rack and Installation	1	\$ 3,796
Everpure Model No. EV9437-11	1	\$ (1,137)
SML Stainless Steel	1	\$ 48,736
SML Stainless Steel	1	\$ 24,780
SML Stainless Steel	1	\$ (69,454)
BSI Model No. ZG9930	1	\$ -
Delfield Model No. UC4048	1	\$ 980
Delfield Model No. UC4048	1	\$ (392)
Alto-Shaam Model No. 750-S	1	\$ 2,644
SML Stainless Steel	1	\$ 20,718
SML Stainless Steel	1	\$ 13,300
SML Stainless Steel	1	\$ 2,454
SML Stainless Steel	1	\$ (720)
Hatco Model No. GRSBF-48-S	1	\$ 1,795
LTI #DI-EF-3	1	\$ 3,098
LTI #DI-2038-CFT-T	1	\$ 2,608
LTI #DI-2038-CFT-T	1	\$ 2,608
Boston Showcase model No. CUSTOM	1	\$ 63,343
Boston Showcase model No. CUSTOM	1	\$ 21,266
Everpure Model No. EV9797-21	1	\$ (835)
Pitco Frialator Model No. SSHLV14T-C/FD	1	\$ 1,240
Pitco Frialator Model No. SSHLV14T-C/FD	1	\$ 384
SML Stainless Steel	1	\$ 1,368
Manitowoc #ID-0502A	1	\$ 3,798
Everpure Model No. EV9324-22	1	\$ (593)
SML Stainless Steel	1	\$ 1,285
Delfield #8159EF	1	\$ 1,687
Santos 68 Juicer	1	\$ 5,304
Everpure Model No. EV9628-28	1	\$ (251)
Halton Model No. Q-KVE-SJ	1	\$ 6,840
Everpure Model No. EV9612-32	1	\$ (251)
Everpure Model No. EV9612-32	1	\$ (251)

DATE:

November 1, 2018

D	E
Amount	Comments
9,634.00	Consigli Change Order #1 Issued in the am
36,960.00	Consigli Change Order #2 Issued in the am
56,882.00	Consigli CO #5 Issued for \$74,318.00 -- \$56,
11,188.00	Consigli CO #8 Issued for \$11,188.00
0.00	VOIDED PER ALAN STARR -- NO LONGER
15,050.00	Consigli CO #5 Issued for \$74,318.00 -- \$15,
1,898.00	Consigli Change Order #3 Issued in the am
-4,622.00	Consigli Change Order #11 Issued for Credi
14,060.00	Consigli Change Order #4 Issued in the am
13,368.00	Consigli Change Order #6 Issued in the am
10,635.00	Consigli Change Order #16 Issued in the tol
-27,579.00	Consigli Change Order #16 Issued in the tol
5,748.00	Consigli Change Order #16 Issued in the tol
71,908.00	Consigli Change Order #9 Issued in the am
0.00	VOIDED
2,386.00	Consigli CO #5 Issued for \$74,318.00 -- \$2,3

94,440.65	Consigli CO#7 Issued for \$21,266.40 for the Consigli CO#10 Issued for \$73,174.25 for th
8,778.00	Consigli CO #13 Issued for \$8,778.00
4,280.00	Consigli CO #13 Issued for \$4,280.00
3,961.00	Consigli CO #13 Issued for \$3,961.00
0.00	VOIDED PER CONSIGLI
8,040.00	Consigli CO #13 Issued for \$8,040.00
3,798.00	Consigli CO #15 Issued for #3,798.00
6,840.00	Consigli Change Order #16 Issued in the tol
0.00	VOIDED PER CONSIGLI'S E-MAIL
-4,622.00	Consigli CO #11 Issued for -\$4,622.00 (whic
0.00	VOIDED PER E-MAIL FROM RACHEL WHITE
2,667.35	Consigli CO #14 Issued for \$2,667.35
1,240.00	Consigli Change Order #16 Issued in the tol
33,504.00	Pending
0.00	VOIDED PER E-MAIL FROM RACHEL WHITE
4,125.00	Consigli Change Order #16 Issued in the tol
1,275.00	Consigli CO #14 Issued for \$1,275.00
1,705.00	Consigli CO #12 Issued for \$1,705.00
1,210.00	Consigli Change Order #16 Issued in the tol
9,075.00	Pending
	Pending
2,659.69	Consigli CO #14 Issued for \$2,659.69
2,996.00	Consigli CO #15 Issued for \$2,996.00

848.00	Consigli CO #14 Issued for \$848.00	
1,280.00	Consigli CO #14 Issued for \$1,280.00	
-69,454.00	Pending	
	Pending	
880.00	Pending	
-1,800.00	Pending	
335,242.69		

Total Cost	In Service Location
\$ 1,368	Deli
\$ 4,186	Deli
\$ 683	Deli
\$ 3,424	Deli
\$ 4,125	Deli
\$ 233	Pizza Area
\$ 1,898	Pizza Area
\$ 2,996	Pizza Area
\$ 1,210	Pizza Area
\$ 683	Grill Area
\$ 175	Grill Area
\$ 320	Grill Area
\$ 5,748	Grill Area
\$ 580	Grill Area
\$ 683	Entrée Section
\$ 175	Entrée Section
\$ 348	Entrée Section
\$ (1,983)	Entrée Section
\$ (3,132)	Entrée Section
\$ 12,447	Self Serve / Soup Station
\$ 5,452	Self Serve / Soup Station
\$ (3,120)	Self Serve / Soup Station
\$ 3,778	Self Serve / Soup Station
\$ (276)	Self Serve / Soup Station
\$ 12,447	Self Serve / Soup Station
\$ 4,575	Self Serve / Soup Station
\$ (1,502)	Self Serve / Soup Station
\$ 1,586	Self Serve / Soup Station
\$ 10,635	Self Serve / Soup Station
\$ 7,002	Self Serve / Soup Station
\$ 9,898	Self Serve / Soup Station
\$ 1,990	Pi Bar
\$ 1,823	Pi Bar
\$ 1,368	Pi Bar
\$ 2,576	Pi Bar
\$ 8,778	Pi Bar
\$ 3,961	Pi Bar
\$ 2,803	Pi Bar
\$ (32,883)	Pi Bar
\$ 14,982	Pi Bar
\$ 2,242	Pi Bar
\$ 398	Pi Bar
\$ 5,890	Pi Bar
\$ 276	Pi Bar
\$ (3,043)	Pi Bar
\$ 645	Pi Bar

\$	398	Pi Bar
\$	9,268	Pi Bar
\$	2,140	Pi Bar
\$	(2,138)	Pi Bar
\$	4,860	Pi Bar
\$	2,140	Pi Bar
\$	492	Pi Bar
\$	3,796	Pi Bar
\$	(1,137)	Condiment Area
\$	48,736	BBQ Area
\$	24,780	BBQ Area
\$	(69,454)	BBQ Area
\$	-	BBQ Area
\$	980	BBQ Area
\$	(392)	BBQ Area
\$	2,644	BBQ Area
\$	20,718	BBQ Area
\$	13,300	BBQ Area
\$	2,454	BBQ Area
\$	(720)	BBQ Area
\$	1,795	BBQ Area
\$	3,098	BBQ Area
\$	2,608	BBQ Area
\$	2,608	BBQ Area
\$	63,343	Storage
\$	21,266	Storage
\$	(835)	Prep Area
\$	1,240	Prep Area
\$	384	Prep Area
\$	1,368	Prep Area
\$	3,798	Dishwashing Area
\$	(593)	Dishwashing Area
\$	1,285	Dishwashing Area
\$	1,687	Self Serve / Soup Station
\$	5,304	Pi Bar
\$	(251)	Condiment Area
\$	6,840	Prep Area
\$	(251)	Prep Area
\$	(251)	Dishwashing Area
\$	275,755	

???

CR-072

CR-120

CR-109

VALID

CR-120

CR-132

CR-139

CR-144

CR-161

CR-339

CR-339

CR-339

CR-123

???

CT-031
CR-203

CR-266

CR-266

CR-266

CR-226

CR-284

CR-339

???

ERMORE (IN FILE)
???

CR-339

???

ERMORE (IN FILE)

CR-339

???

BC-006

CR-339

???

???

CR-333

???

???

CR-180

???

???

COMPANY NAME: MATHWORKS
PROJECT: LAKESIDE CAMPUS BUILDOUT
SUPPLIER: BOSTON SHOWCASE COMPANY

Line	Item Number	Item Name
1	1.101	Millwork
2	1.101.1	Deck Mount Facuet
3	1.101.2	Deck Mount Facuet
4	1.101.3	Soap Dispenser
5	1.101.4	Paper Towel Dispenser
6	1.102	Reach In Undercounter Refrigerator
7	1.103	Sandwich / Salad Prep Refrigerator
8	1.104	Millwork
9	1.105	Microwave Convection / Impingement Oven
10	1.108	Millwork
11	1.109	ZGUARD
12	1.110	Dual Temp Food Well, Drop-In
13	1.111	Cold Food Well Unit, Drop-In, Refrigerated
14	1.112	Drop-In Refrigerated Merchandiser
15	1.113	Heated Merchandiser
16	1.114	Garbage Can
17	1.201	Millwork
18	1.201.1	Deck Mount Facuet
19	1.201.2	Deck Mount Facuet
20	1.201.3	Soap Dispenser
21	1.201.4	Paper Towel Dispenser
22	1.202	Pizza Preparation Refrigerator
23	1.203	Fire Deck Oven, Gas
24	1.204	Millwork
25	1.206	Millwork
26	1.207	ZGUARD
27	1.208	Heated Shelf Food Warmer
28	1.210	Garbage Can
29	1.301	Millwork
30	1.302	ZGUARD
31	1.303	Dual Temp Food Well, Drop-In
32	1.304	Heated Shelf Food Warmer
33	1.305	Dual Temp Food Well, Drop-In
34	1.308	Millwork
35	1.308.1	Deck Mount Facuet
36	1.308.2	Deck Mount Facuet
37	1.308.3	Soap Dispenser
38	1.308.4	Paper Towel Dispenser
39	1.309	Capture-Jet Hood
40	1.310	Millwork
41	1.311	Fire System
42	1.312	Fryer

43	1.312-G	Safety System Movable Gas Connector
44	1.313	Convection Oven
45	1.313-G	Safety System Movable Gas Connector
46	1.314	Countertop Griddle
47	1.314A	Equipment Stand, Refrigerated Base
48	1.314-G	Safety System Movable Gas Connector
49	1.315	HD Range, 48" Charbroiler
50	1.315A	Equipment Stand, Refrigerated Base
51	1.315-G	Safety System Movable Gas Connector
52	1.316	HD Range, 24", Open Burners
53	1.316-G	Safety System Movable Gas Connector
54	1.317	Salamander
55	1.319	Capture-Jet Hood
56	1.320	Millwork
57	1.321	Garbage Can
58	1.322	Fire System
59	1.323	HD Range, 18", 2 Open Burners
60	1.323-G	Safety System Movable Gas Connector
61	1.401	Millwork
62	1.402	ZGUARD
63	1.403	Dual Temp Food Well, Drop-In
64	1.404	Heated Shelf Food Warmer
65	1.405	Dual Temp Food Well, Drop-In
66	1.407	Millwork
67	1.407.1	Deck Mount Facuet
68	1.407.2	Deck Mount Facuet
69	1.407.3	Soap Dispenser
70	1.407.4	Paper Towel Dispenser
71	1.408	Roll-In Heated Cabinet
72	1.409	Pan Rack, BUN
73	1.410	Millwork
74	1.410.1	Deck Mount Facuet
75	1.411	Garbage Can
76	1.412	Blast Chiller/Shock Freezer, Reach-In
77	1.413	Coffee Brewer
78	1.414	Coffee Dispenser
79	1.502	Millwork
80	1.503	ZGUARD
81	1.504	Cold Food Well Unit, Drop-In, Refrigerated
82	1.507	Millwork
83	1.508	ZGUARD
84	1.509	Heated Shelf Food Warmer
85	1.510	Dual Temp Food Well, Drop-In
86	1.511	Induction Food Well
87	1.601	Millwork
88	1.604	Self-Service Refrigerated Merchandiser
89	1.605	Millwork

90	1.701	Millwork
91	1.701.1	Deck Mount Facuet
92	1.701.2	Deck Mount Facuet
93	1.701.3	Soap Dispenser
94	1.701.4	Paper Towel Dispenser
95	1.702	Microwave Convection / Impingement Oven
96	1.703	High Speed Grill
97	1.704	Induction Food Well
98	1.705	Dual Temp Food Well, Drop-In
99	1.706	Reach In Undercounter Refrigerator
100	1.707	Bar Blender
101	1.709	Millwork
102	1.710	Food Guard
103	1.711	Refrigerated Display Case
104	1.712	Reach In Undercounter Refrigerator
105	1.713	Open Merchandiser
106	1.714	Ice Bin
107	1.717	Garbage Can
108	1.718-1.719	Back Bar Cooler
109	1.720	Millwork
110	1.721-1.722	Beer Tap
111	1.813	Water Filtration System
112	1.813.1	Water Filtration System, Cartridge
113	1.901	Millwork
114	1.901.3	Soap Dispenser
115	1.901.4	Paper Towel Dispenser
116	1.902	ZGUARD
117	1.904	Reach In Undercounter Refrigerator
118	1.905	Heated Low Temp Holding Cabinet
119	1.909	Millwork
120	1.909.1	Deck Mount Facuet
121	1.909.2	Deck Mount Facuet
122	1.910	Outdoor Grill
123	1.911	Millwork
124	2.101	Walk-In
125	2.101A	Walk-In Safety Flooring
126	2.106	Dunnage Rack
127	2.107	Pan Rack, BUN
128	2.108	Millwork
129	2.109	Receiving Scale
130	2.110	Plastic With Metal Frame Shelving
131	2.111	Plastic With Metal Frame Shelving
132	2.115	Ref. Rack
133	2.116	Can Rack
134	2.201	Millwork
135	2.201.1	Deck Mount Facuet
136	2.202	Millwork

137	2.203	Equipment Stand
138	2.204	Meat Slicer
139	2.210	Equipment Stand
140	2.211	Planetary Mixer
141	2.212	Planetary Mixer
142	2.213	Millwork
143	2.213.1	Deck Mount Facuet
144	2.214	Millwork
145	2.215	Hand Sink
146	2.216	Millwork
147	2.219	Ingredient Bin
148	2.223	Commercial Waste Container
149	2.224	Commercial Waste Container
150	2.301	Hand Sink
151	2.302A/B	Capture-Jet Hood
152	2.303	Fire System
153	2.304	Millwork
154	2.305A	Combi Oven
155	2.305A-G	Safety System Movable Gas Connector
156	2.305A-W	HI PSI Water Connectors & Fittings
157	2.305B	Combi Oven
158	2.305B-G	Safety System Movable Gas Connector
159	2.305B-W	HI PSI Water Connectors & Fittings
160	2.306	Convection Oven
161	2.306-G	Safety System Movable Gas Connector
162	2.307	HD Range 36", 4 Open Burners
163	2.307-G	Safety System Movable Gas Connector
164	2.308	HD Range, 24" Charbroiler
165	2.308-G	Safety System Movable Gas Connector
166	2.309	Tilting Skillet. GAS
167	2.310	Range, Wok, GAS
168	2.310.1	Water Filtration System, Cartridge
169	2.311	Floor Trough
170	2.312	Water Filtration System
171	2.312.1	Water Filtration System, Cartridge
172	2.313	Fryer
173	2.313-G	Safety System Movable Gas Connector
174	2.314	Millwork
175	2.315	Millwork
176	2.315.1	Deck Mount Facuet
177	2.316	HD Range, 18", 2 Open Burners
178	2.316-G	Safety System Movable Gas Connector
179	2.317	Pot Rack
180	2.318	Reach In Undercounter Refrigerator
181	2.319	Commercial Waste Container
182	2.320	Millwork
183	2.320.1	Deck Mount Facuet

184	2.321	Millwork
185	2.322	VFD Control
186	2.323	Millwork
187	2.401-2.402	Ice Cuber
188	2.403	Floor Trough
189	2.409	Water Filtration System
190	2.409.1	Water Filtration System, Cartridge
191	2.410	Millwork
192	2.410.1	Wall/Splash Mount Faucet
193	2.411	Pot Rack
194	2.412	Dishwasher, Pot/Pan/Utensil, Door Type
195	2.413	Millwork
196	2.414	Pot Rack
197	2.415	Hand Sink
198	2.416	Plastic With Metal Frame Shelving
199	2.417	Commercial Waste Container
200	2.418	Type II Hood
201		Lever Wastes
Equipment T		

DATE:

NOVEMBER 20, 2018

Item Details	Quantity	Unit Cost
SML Stainless Steel	1	\$ 6,375
T&S Brass Model No. B-1123	1	\$ 84
T&S Brass Model No. B-1111	1	\$ 72
Bobrick Washroom Model No. B-822216	1	\$ 38
Bobrick Washroom Model No. B-526	1	\$ 185
Delfield Model No. UC4048	1	\$ 2,051
Delfield Model No. UCD4464N-16	2	\$ 4,146
SML Stainless Steel	1	\$ 809
Turbochef Model No. 13	2	\$ 9,242
SML Stainless Steel	1	\$ 27,014
BSI Model No. ZG9930	1	\$ 13,106
Low Temp Industries Model No. QSCHP-2	1	\$ 5,714
Low Temp Industries Model No. DI-2063TA	1	\$ 3,070
RPI Industries Model No. VIAS2-27-R-SQ-SC-INS	1	\$ 11,674
RPI Industries Model No. VIHD2-34-R-SQ-CO	1	\$ 6,998
Rubbermaid Model No. FG354060GRAY	2	\$ 71
SML Stainless Steel	1	\$ 7,285
T&S Brass Model No. B-1123	1	\$ 84
T&S Brass Model No. B-1111	1	\$ 72
Bobrick Washroom Model No. B-822216	1	\$ 38
Bobrick Washroom Model No. B-526	1	\$ 185
Delfield Model No. 18660PTBM	1	\$ 4,089
Wood Stone Model No. FD-9660-RFGLR-IR	1	\$ 30,954
SML Stainless Steel	1	\$ 3,743
SML Stainless Steel - Hearth Service	1	\$ 27,116
BSI Model No. ZG9930	1	\$ 15,222
Hatco Model No. GRSBF-48-S	2	\$ 1,011
Rubbermaid Model No. FG354060GRAY	2	\$ 71
SML Stainless Steel - Entrée	1	\$ 32,478
BSI Model No. ZG9930	1	\$ 13,806
Low Temp Industries Model No. QSCHP-2	1	\$ 5,714
Hatco Model No. GRSBF-48-S	1	\$ 1,011
Low Temp Industries Model No. QSCHP-3	1	\$ 6,386
SML Stainless Steel	1	\$ 16,796
T&S Brass Model No. B-1123	1	\$ 84
T&S Brass Model No. B-1111	1	\$ 72
Bobrick Washroom Model No. B-822216	1	\$ 38
Bobrick Washroom Model No. B-526	1	\$ 185
Halton Model No. Q-KVE-SJ	1	\$ 12,988
SML Stainless Steel	1	\$ 1,112
Allstate Fire Model No. R102	1	\$ 1,275
Pitco Frialator Model No. SSHLV14T-C/FD	1	\$ 11,157

Dormont Manufacturing Model No. 1675BPQ2SR36	1	\$	177
Blodgett Oven Model No. DFG-100 SGL	1	\$	7,211
Dormont Manufacturing Model No. 1675BPQ2SR36	1	\$	177
Jade Range Model No. JGT-2436	2	\$	3,108
Traulsen Model No. TE072HT	1	\$	7,559
Dormont Manufacturing Model No. 1675BPQ2SR36	2	\$	177
Jade Range Model No. JTKC-48-RAD	1	\$	8,595
Traulsen Model No. TE048HT	1	\$	6,333
Dormont Manufacturing Model No. 1675BPQ2SR36	1	\$	177
Jade Range Model No. JTRH-4-A	1	\$	3,726
Dormont Manufacturing Model No. 1675BPQ2SR36	1	\$	177
Jade Range Model No. JSB-36WM	1	\$	3,208
Halton Model No. Q-KVE-SJ	1	\$	12,988
SML Stainless Steel	1	\$	1,112
Rubbermaid Model No. FG354060GRAY	1	\$	71
Allstate Fire Model No. R102	1	\$	1,912
Jade Range Model No. JTRH-2	1	\$	3,149
Dormont Manufacturing Model No. 1675BPQ2SR36	1	\$	177
SML Stainless Steel - Grill	1	\$	26,407
BSI Model No. ZG9930	1	\$	13,806
Low Temp Industries Model No. QSCHP-2	1	\$	5,714
Hatco Model No. GRSBF-48-S	1	\$	1,011
Low Temp Industries Model No. QSCHP-3	1	\$	6,386
SML Stainless Steel	1	\$	8,904
T&S Brass Model No. B-1123	1	\$	84
T&S Brass Model No. B-1111	1	\$	72
Bobrick Washroom Model No. B-822216	1	\$	38
Bobrick Washroom Model No. B-526	1	\$	185
Traulsen Model No. RIH232L-FHS	1	\$	8,250
Cres Cor Model No. 273-65-12/1818	2	\$	672
SML Stainless Steel	1	\$	4,249
T&S Brass Model No. B-1123	1	\$	84
Rubbermaid Model No. FG354060GRAY	1	\$	71
Irinox USA Model No. MF 70.1L-MYA	1	\$	24,187
Fetco Model No. CBS-52H-15	1	\$	1,977
Fetco Model No. D049	12	\$	260
SML Stainless Steel - Salad Bar	1	\$	37,335
BSI Model No. ZG9930	1	\$	21,672
Low Temp Industries Model No. DI-2063TA	3	\$	3,070
SML Stainless Steel - Hot Entrée Bar & Soup	1	\$	47,148
BSI Model No. ZG9930	1	\$	25,014
Hatco Model No. GRSBF-48-S	2	\$	1,011
Low Temp Industries Model No. QSCHP-2	2	\$	5,714
CookTek Model No. 659801	3	\$	853
SML Stainless Steel - Cashier Stand	3	\$	13,153
Structural Concepts Model No. B42	2	\$	8,626
SML Stainless Steel - Dessert & Snacks	1	\$	9,815

SML Stainless Steel	1	\$	10,524
T&S Brass Model No. B-1123	1	\$	84
T&S Brass Model No. B-1111	1	\$	72
Bobrick Washroom Model No. B-822216	1	\$	38
Bobrick Washroom Model No. B-526	1	\$	185
Turbochef Model No. SOTA	1	\$	6,883
Electrolux Professional Model No. 603859	1	\$	6,720
CookTek Model No. 659801	1	\$	853
Low Temp Industries Model No. QSCHP-1	1	\$	5,186
Delfield Model No. UC4048	1	\$	2,249
Vitamix Model No. 36019	2	\$	1,022
SML Stainless Steel	1	\$	32,883
BSI Model No. DECO-100	1	\$	1,247
RPI Industries Model No. VIAS3-34-R-SQ-SC-IS	1	\$	13,127
Delfield Model No. 407	1	\$	1,559
Structural Concepts Model No. CO3324R-UC	1	\$	5,336
Glastender Model No. IBB-1B	1	\$	718
Rubbermaid Model No. FG354060GRAY	2	\$	71
Glastender BB84RH	1	\$	3,045
SML Stainless Steel - Beer/Wine	1	\$	14,063
Glastender Model No. CUSTOM	1	\$	2,138
Everpure Model No. EV9437-11	1	\$	1,134
Everpure Model No. EV9628-28	1	\$	256
SML Stainless Steel	1	\$	20,336
Bobrick Washroom Model No. B-822216	1	\$	38
Bobrick Washroom Model No. B-526	1	\$	185
BSI Model No. ZG9930	2	\$	5,992
Delfield Model No. UC4048	2	\$	2,150
Alto-Shaam Model No. 750-S	2	\$	2,347
SML Stainless Steel	1	\$	6,880
T&S Brass Model No. B-1123	1	\$	84
T&S Brass Model No. B-1111	1	\$	72
Crown Verity Model No. MCB-72RDP-NG	1	\$	4,607
SML Stainless Steel	1	\$	4,654
American Panel Model No. CUSTOM	1	\$	41,645
Boston Showcase Model No. TITAN CUSTOM	1	\$	10,602
Metro Model No. HP2248PD	8	\$	118
New Age Model No. 4330	6	\$	864
SML Stainless Steel	1	\$	1,316
Detecto Model No. 8852F-204	1	\$	865
Metro Model No. MQ2460G	10		
Metro Model No. MQ2160G	4		
Boston Showcase model No. CUSTOM	1	\$	47,368
Advance Tabco Model No. CR10-162	1	\$	534
SML Stainless Steel	1	\$	2,833
T&S Brass Model No. B-1123	1	\$	84
SML Stainless Steel	2	\$	456

Advance Tabco Model No. AG-MT-242	1	\$	440
Hobart Model No. HS6-1	1	\$	4,037
Advance Tabco Model No. AG-MT-242	1	\$	440
Hobart Model No. HL200C-1STD	1	\$	5,944
Hobart Model No. HL600-1STD	1	\$	14,290
SML Stainless Steel	1	\$	3,137
T&S Brass Model No. B-1123	1	\$	84
SML Stainless Steel	2	\$	506
Advance Tabco Model No. 7-PS-79	1	\$	745
SML Stainless Steel	1	\$	911
Rubbermaid Model No. FG360088WHT	4	\$	320
Rubbermaid Model No. FG263200GRAY	2	\$	95
Rubbermaid Model No. FG263200GRAY	1	\$	95
Advance Tabco Model No. 7-PS-79	2	\$	745
Halton Model No. Q-KVE-SJ	2	\$	16,816
Allstate Fire Model No. R102	1	\$	3,187
SML Stainless Steel	1	\$	1,720
Alto-Shaam Model No. CTP7-20G	1	\$	18,451
Dormont Manufacturing Model No. 1675BPQ2SR36	1	\$	177
Dormont Manufacturing Model No. W75B2Q48	1	\$	132
Alto-Shaam Model No. CTP7-20G	1	\$	17,104
Dormont Manufacturing Model No. 1675BPQ2SR36	1	\$	177
Dormont Manufacturing Model No. W75B2Q48	1	\$	132
Blodgett Oven Model No. DFG-100 DBL	1	\$	13,697
Dormont Manufacturing Model No. 1675BPQ2SR36	2	\$	177
Jade Range Model No. JTRH-4-36C	1	\$	7,980
Dormont Manufacturing Model No. 1675BPQ2SR36	1	\$	177
Jade Range Model No. JTKC-24-RAD	1	\$	6,070
Dormont Manufacturing Model No. 1675BPQ2SR36	1	\$	177
Groen Model No. BPP-30G	1	\$	15,497
Jade Range Model No. JBR-1414J	1	\$	6,307
Everpure Model No. EV961816	1	\$	58
Advance Tabco Model No. FFTG-1830	1	\$	1,177
Everpure Model No. EV9797-21	1	\$	833
Everpure Model No. EV961816	6	\$	58
Pitco Frialator Model No. SSHLV14T-C/FD	1	\$	10,994
Dormont Manufacturing Model No. 1675BPQ2SR36	1	\$	177
SML Stainless Steel	2	\$	1,063
SML Stainless Steel	1	\$	3,238
T&S Brass Model No. B-1123	1	\$	84
Jade Range Model No. JTRH-2	1	\$	3,453
Dormont Manufacturing Model No. 1675BPQ2SR36	1	\$	177
Select Stainless Products Model No. 9CPR-S	1	\$	829
Delfield Model No. UC4048	1	\$	1,936
Rubbermaid Model No. FG263200GRAY	2	\$	95
SML Stainless Steel	1	\$	2,833
T&S Brass Model No. B-1123	1	\$	84

SML Stainless Steel	2	\$ 456
Melink Corporation Model No. CUSTOM	1	\$ 10,406
SML Stainless Steel	1	\$ 1,213
Manitowoc Model No. ID-0503W	1	\$ 3,589
Advance Tabco Model No. FFTG-1230	1	\$ 1,030
Everpure Model No. EV9324-22	1	\$ 592
Everpure Model No. EV9612-32	2	\$ 75
SML Stainless Steel	1	\$ 6,678
T&S Brass Model No. B-0231-CC	1	\$ 772
Advance Tabco Model No. GW-48	1	\$ 235
Hobart Model No. PW10-2	1	\$ 13,990
SML Stainless Steel	1	\$ 911
Advance Tabco Model No. GW-48	1	\$ 235
Advance Tabco Model No. 7-PS-79	1	\$ 745
Metro Model No. MQ1860G	1	\$ 3,118
Rubbermaid Model No. FG263200GRAY	1	\$ 95
Halton Model No. Q-CH	1	\$ 1,526
SML Stainless Steel Group Model No. Lever	15	\$ 152
Total		

Additional:
Sales Tax
Installation Labor

Total

Total Cost	In Service Location
\$ 6,375	Deli
\$ 84	Deli
\$ 72	Deli
\$ 38	Deli
\$ 185	Deli
\$ 2,051	Deli
\$ 8,292	Deli
\$ 809	Deli
\$ 18,484	Deli
\$ 27,014	Deli
\$ 13,106	Deli
\$ 5,714	Deli
\$ 3,070	Deli
\$ 11,674	Deli
\$ 6,998	Deli
\$ 142	Deli
\$ 7,285	Pizza Area
\$ 84	Pizza Area
\$ 72	Pizza Area
\$ 38	Pizza Area
\$ 185	Pizza Area
\$ 4,089	Pizza Area
\$ 30,954	Pizza Area
\$ 3,743	Pizza Area
\$ 27,116	Pizza Area
\$ 15,222	Pizza Area
\$ 2,022	Pizza Area
\$ 142	Pizza Area
\$ 32,478	Grill Area
\$ 13,806	Grill Area
\$ 5,714	Grill Area
\$ 1,011	Grill Area
\$ 6,386	Grill Area
\$ 16,796	Grill Area
\$ 84	Grill Area
\$ 72	Grill Area
\$ 38	Grill Area
\$ 185	Grill Area
\$ 12,988	Grill Area
\$ 1,112	Grill Area
\$ 1,275	Grill Area
\$ 11,157	Grill Area

\$	177	Grill Area
\$	7,211	Grill Area
\$	177	Grill Area
\$	6,216	Grill Area
\$	7,559	Grill Area
\$	354	Grill Area
\$	8,595	Grill Area
\$	6,333	Grill Area
\$	177	Grill Area
\$	3,726	Grill Area
\$	177	Grill Area
\$	3,208	Grill Area
\$	12,988	Grill Area
\$	1,112	Grill Area
\$	71	Grill Area
\$	1,912	Grill Area
\$	3,149	Grill Area
\$	177	Grill Area
\$	26,407	Entrée Section
\$	13,806	Entrée Section
\$	5,714	Entrée Section
\$	1,011	Entrée Section
\$	6,386	Entrée Section
\$	8,904	Entrée Section
\$	84	Entrée Section
\$	72	Entrée Section
\$	38	Entrée Section
\$	185	Entrée Section
\$	8,250	Entrée Section
\$	1,344	Entrée Section
\$	4,249	Entrée Section
\$	84	Entrée Section
\$	71	Entrée Section
\$	24,187	Entrée Section
\$	1,977	Entrée Section
\$	3,120	Entrée Section
\$	37,335	Self Serve / Soup Station
\$	21,672	Self Serve / Soup Station
\$	9,210	Self Serve / Soup Station
\$	47,148	Self Serve / Soup Station
\$	25,014	Self Serve / Soup Station
\$	2,022	Self Serve / Soup Station
\$	11,428	Self Serve / Soup Station
\$	2,559	Self Serve / Soup Station
\$	39,459	Self Serve / Soup Station
\$	17,252	Self Serve / Soup Station
\$	9,815	Self Serve / Soup Station

\$	10,524	Pi Bar
\$	84	Pi Bar
\$	72	Pi Bar
\$	38	Pi Bar
\$	185	Pi Bar
\$	6,883	Pi Bar
\$	6,720	Pi Bar
\$	853	Pi Bar
\$	5,186	Pi Bar
\$	2,249	Pi Bar
\$	2,044	Pi Bar
\$	32,883	Pi Bar
\$	1,247	Pi Bar
\$	13,127	Pi Bar
\$	1,559	Pi Bar
\$	5,336	Pi Bar
\$	718	Pi Bar
\$	142	Pi Bar
\$	3,045	Pi Bar
\$	14,063	Pi Bar
\$	2,138	Pi Bar
\$	1,134	Condiment Area
\$	256	Condiment Area
\$	20,336	BBQ Area
\$	38	BBQ Area
\$	185	BBQ Area
\$	11,984	BBQ Area
\$	4,300	BBQ Area
\$	4,694	BBQ Area
\$	6,880	BBQ Area
\$	84	BBQ Area
\$	72	BBQ Area
\$	4,607	BBQ Area
\$	4,654	BBQ Area
\$	41,645	Storage
\$	10,602	Storage
\$	944	Storage
\$	5,184	Storage
\$	1,316	Storage
\$	865	Storage
\$	12,818	Storage
\$	6,560	Storage
\$	47,368	Storage
\$	534	Storage
\$	2,833	Prep Area
\$	84	Prep Area
\$	912	Prep Area

\$	440	Prep Area
\$	4,037	Prep Area
\$	440	Prep Area
\$	5,944	Prep Area
\$	14,290	Prep Area
\$	3,137	Prep Area
\$	84	Prep Area
\$	1,012	Prep Area
\$	745	Prep Area
\$	911	Prep Area
\$	1,280	Prep Area
\$	190	Prep Area
\$	95	Prep Area
\$	1,490	Prep Area
\$	33,632	Prep Area
\$	3,187	Prep Area
\$	1,720	Prep Area
\$	18,451	Prep Area
\$	177	Prep Area
\$	132	Prep Area
\$	17,104	Prep Area
\$	177	Prep Area
\$	132	Prep Area
\$	13,697	Prep Area
\$	354	Prep Area
\$	7,980	Prep Area
\$	177	Prep Area
\$	6,374	Prep Area
\$	177	Prep Area
\$	15,497	Prep Area
\$	6,307	Prep Area
\$	58	Prep Area
\$	1,177	Prep Area
\$	833	Prep Area
\$	348	Prep Area
\$	10,994	Prep Area
\$	177	Prep Area
\$	2,126	Prep Area
\$	3,238	Prep Area
\$	84	Prep Area
\$	3,453	Prep Area
\$	177	Prep Area
\$	829	Prep Area
\$	1,936	Prep Area
\$	190	Prep Area
\$	2,833	Prep Area
\$	84	Prep Area

\$	912	Prep Area
\$	10,406	Prep Area
\$	1,213	Prep Area
\$	3,589	Dishwashing Area
\$	1,030	Dishwashing Area
\$	592	Dishwashing Area
\$	150	Dishwashing Area
\$	6,678	Dishwashing Area
\$	772	Dishwashing Area
\$	235	Dishwashing Area
\$	13,990	Dishwashing Area
\$	911	Dishwashing Area
\$	235	Dishwashing Area
\$	745	Dishwashing Area
\$	3,118	Dishwashing Area
\$	95	Dishwashing Area
\$	1,526	Dishwashing Area
\$	2,280	
\$	1,226,653	

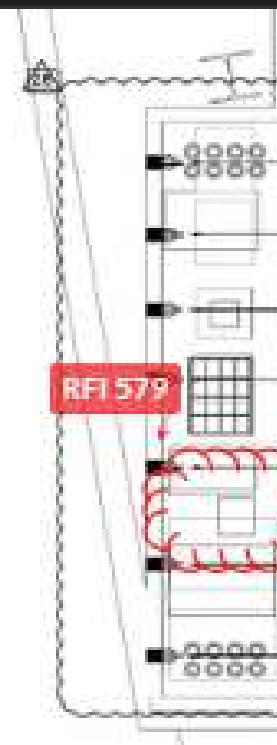
\$ 76,666

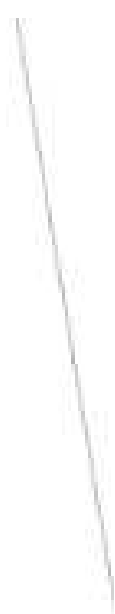
\$ 290,681

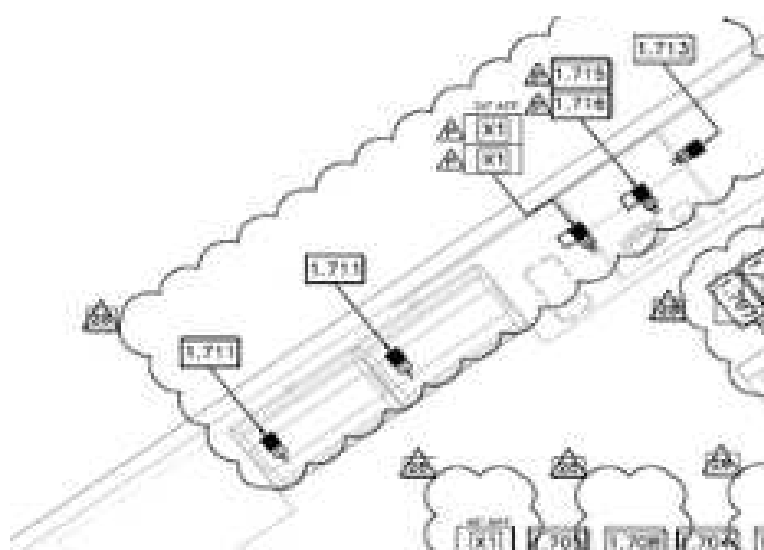
\$ 1,594,000

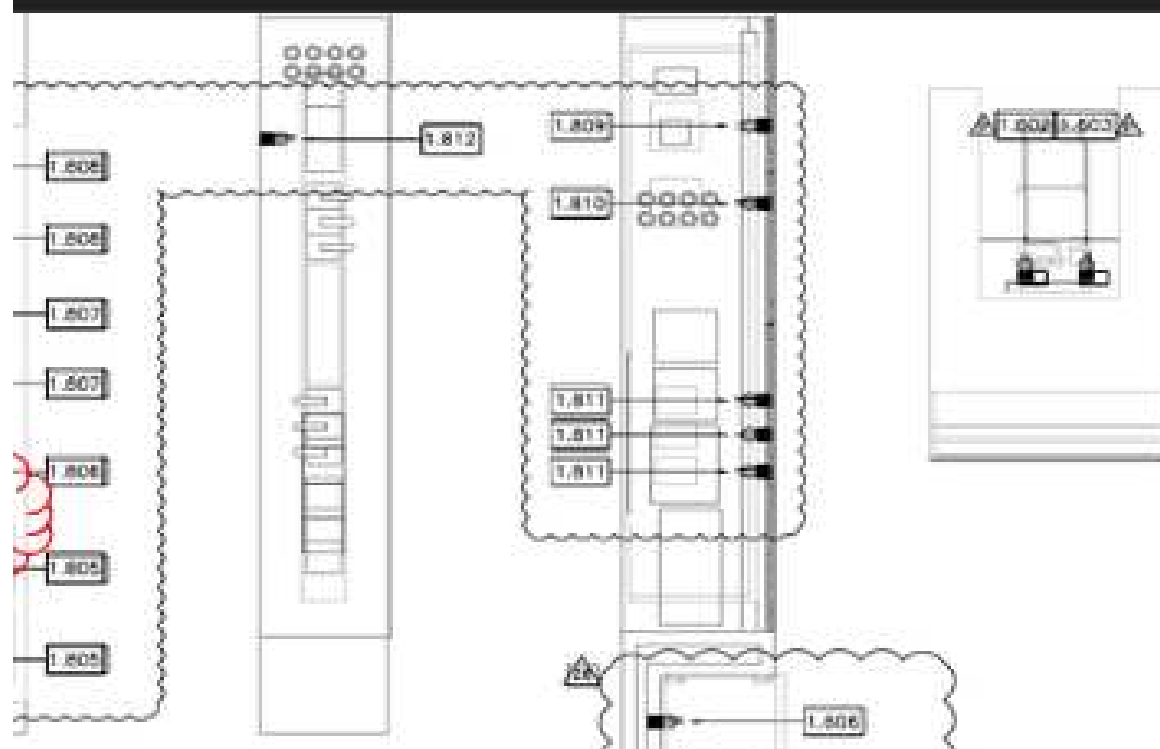
Item Code	Area
1.1	Deli
1.2	Pizza Area
1.3	Grill Area
1.4	Entrée Section
1.5	Self Serve / Soup Station
1.6	Self Serve / Soup Station
1.7	Pi Bar
1.8	Condiment Area
1.9	BBQ Area
2.1	Storage
2.2	Prep Area
2.3	Prep Area
2.4	Dishwashing Area

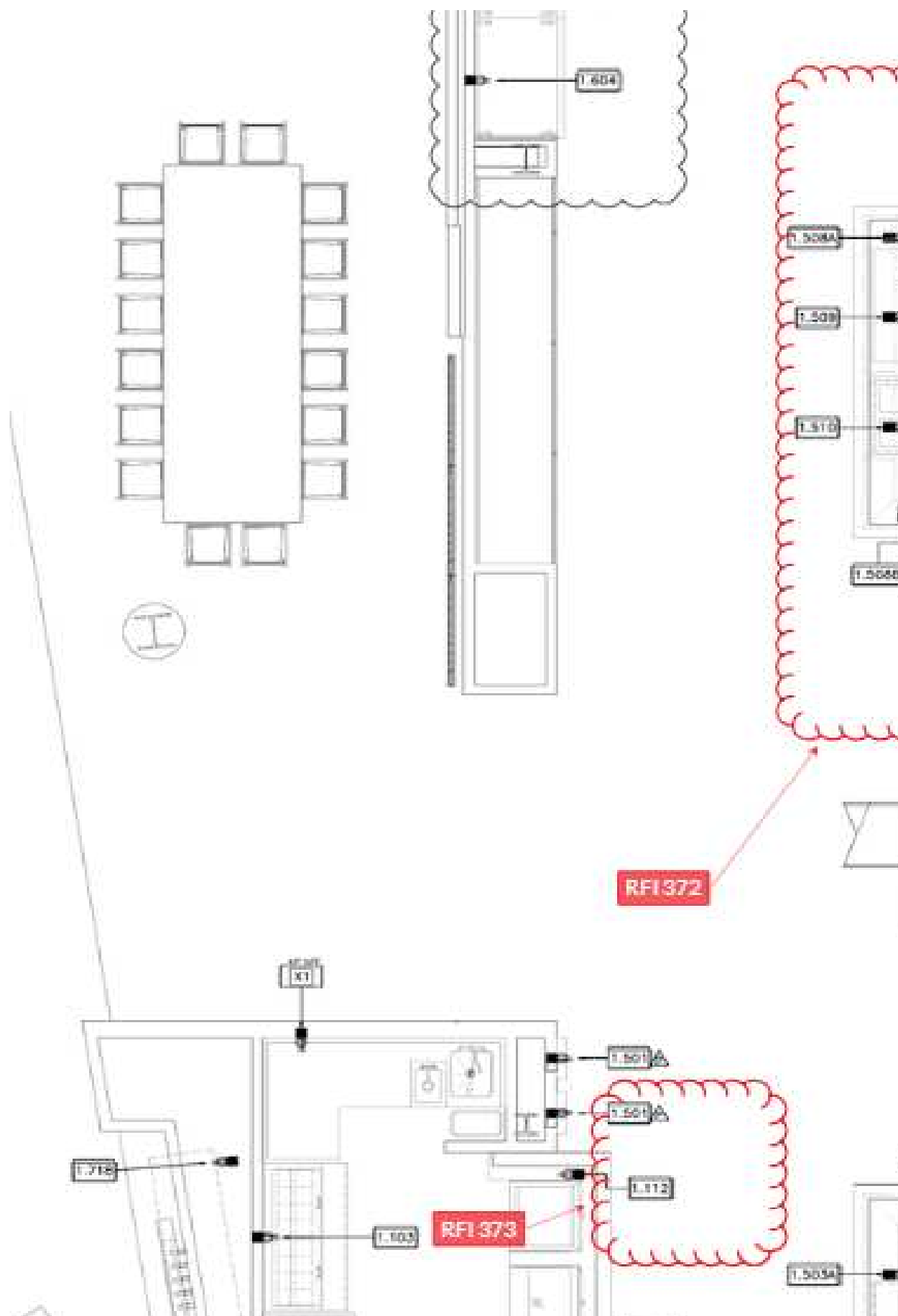
FS-120: SERVERY AND KITCHEN FOODS

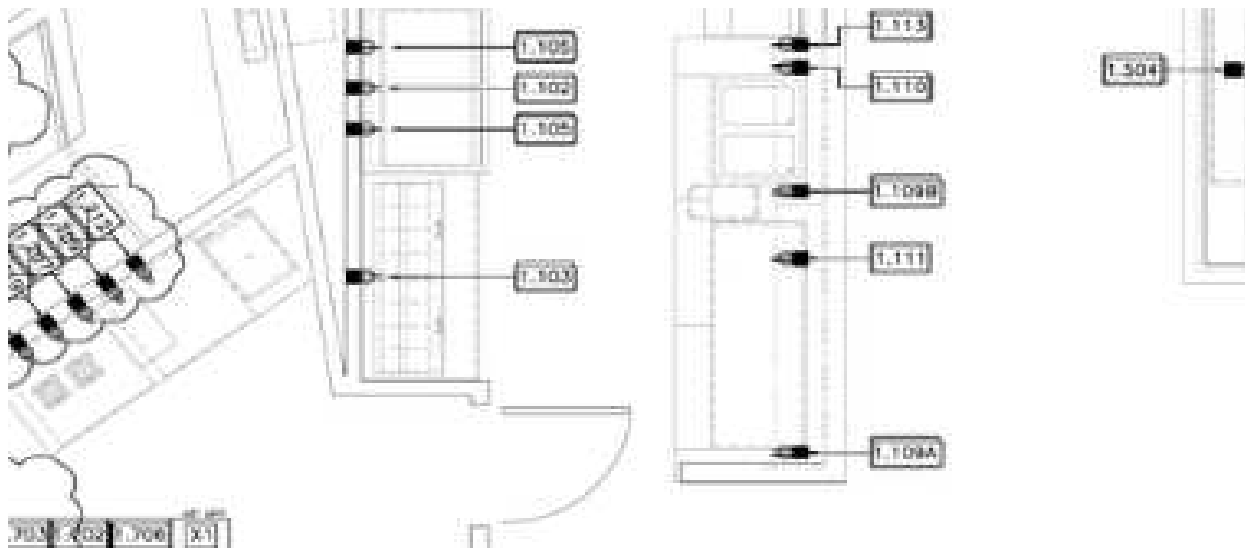


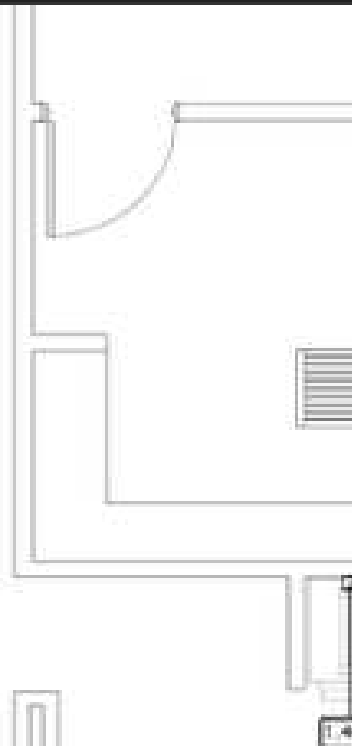
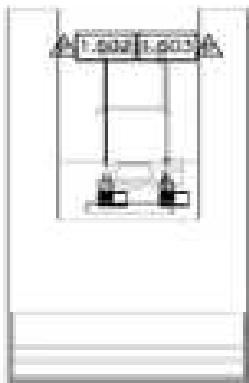
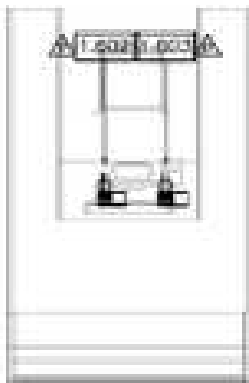
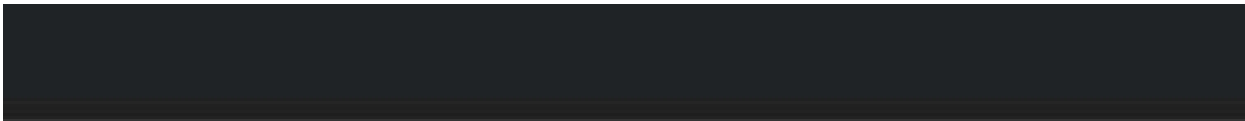


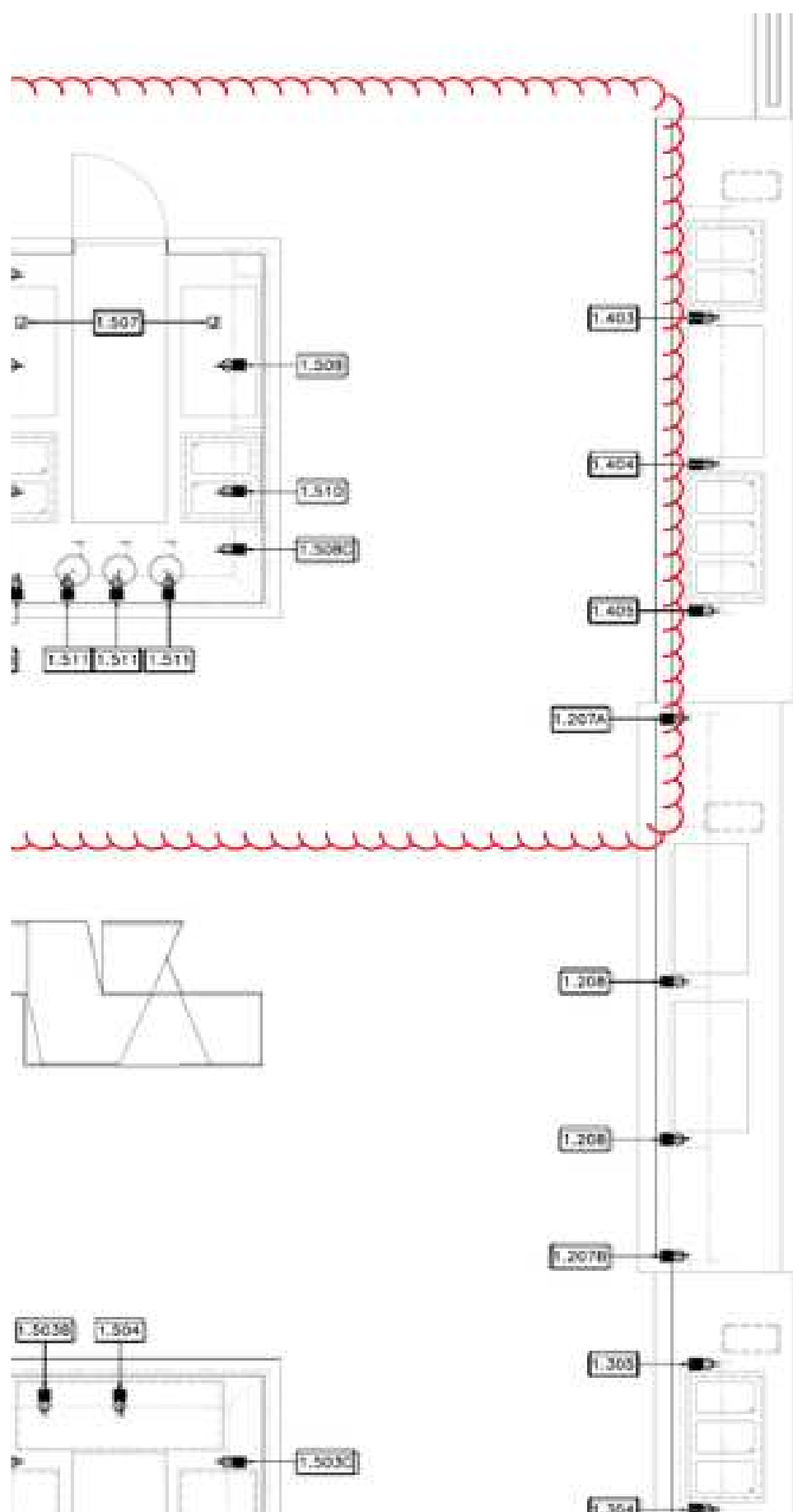
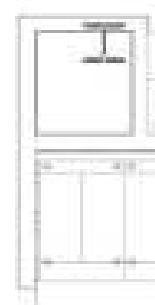
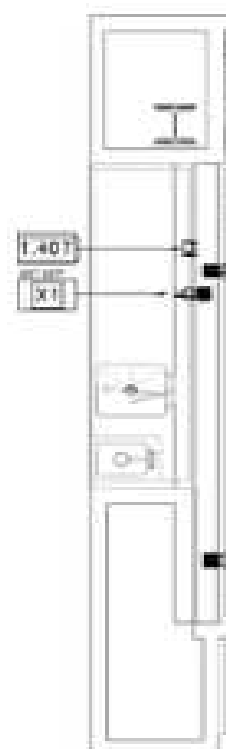


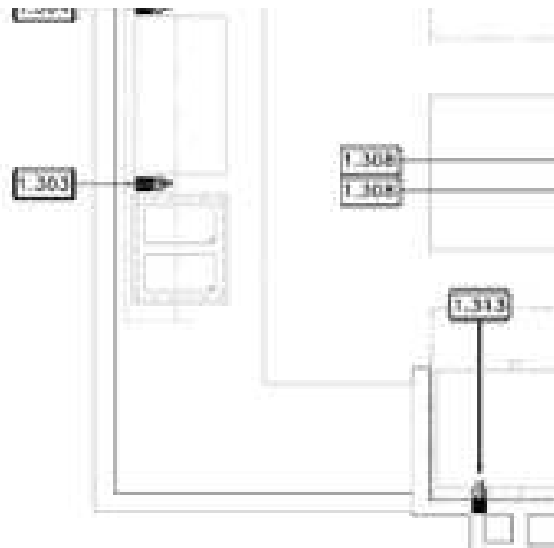
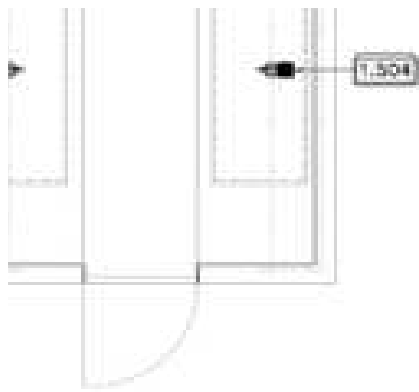


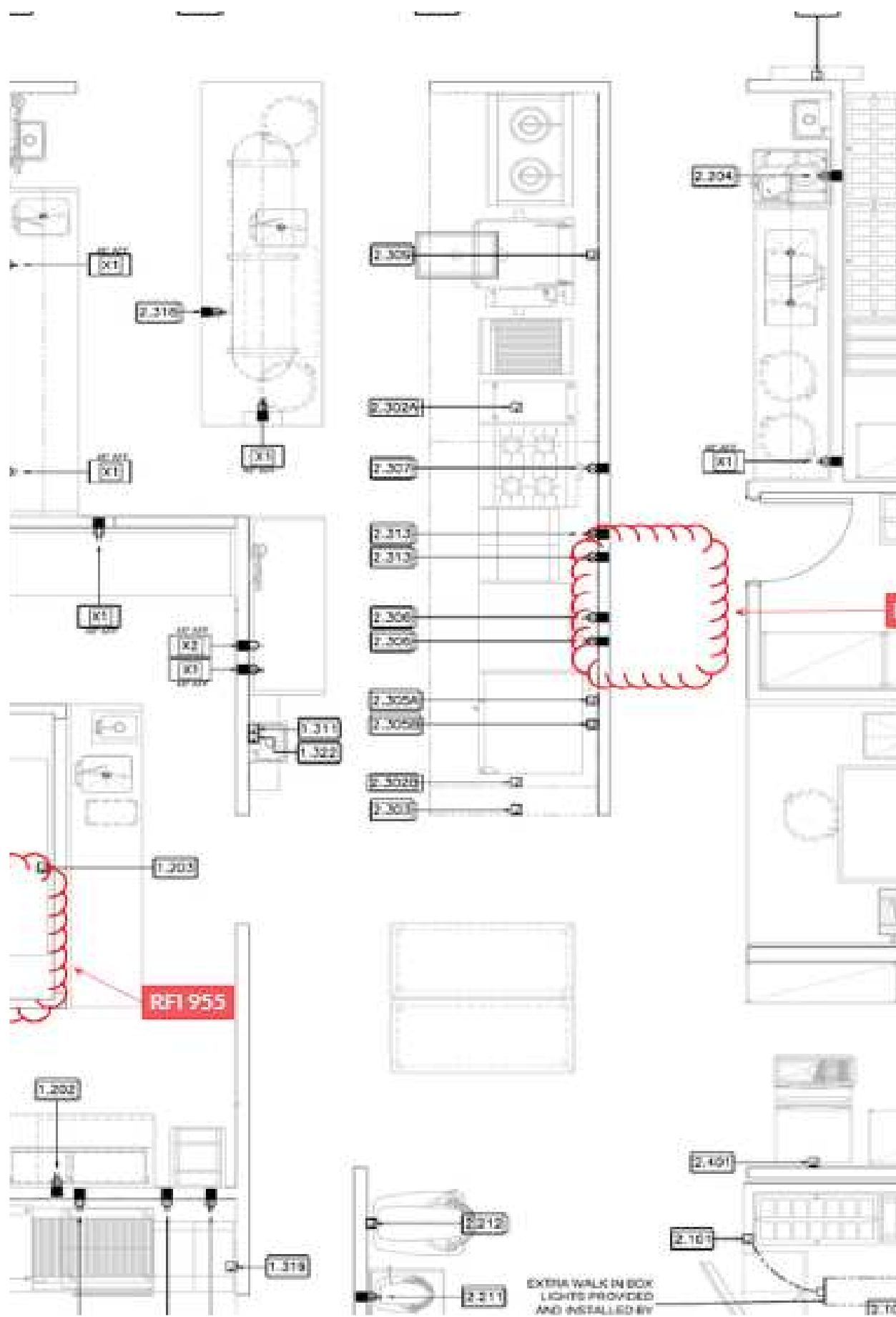








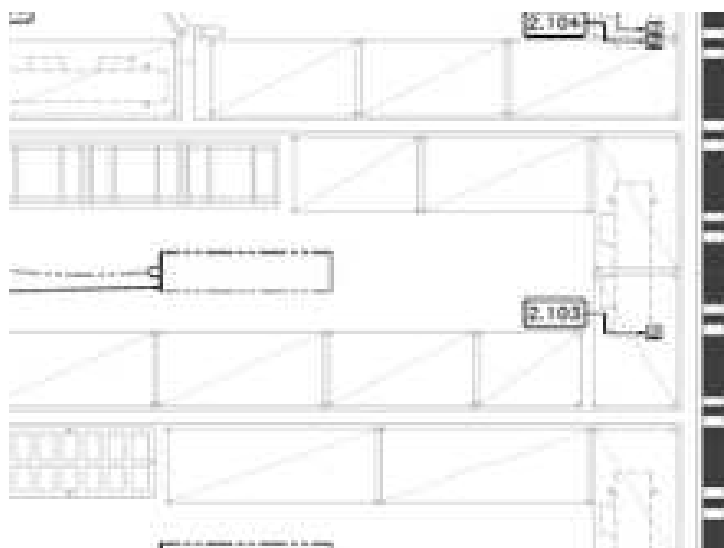












Trade	Asset Type	Manufacturer	Model
Food Services	Oven	Alto Shaam	CTP7
Food Services	Oven	Alto Shaam	CTP7
Food Services	Oven	Alto Shaam	750-S
Food Services	Oven	Alto Shaam	750-S
Food Services	Walk In	American Panel	
Food Services	Fire System	Ansul	R102
Food Services	Reach In	Beverage Air	UCF
Food Services	Reach In	Beverage Air	UCF
Food Services	Freezer	Beverage Air	CF3
Food Services	Freezer	Beverage Air	CF3
Food Services	Oven	Blodgett	DFG-100
Food Services	Oven	Blodgett	DFG-100
Food Services		BSI	ZG9930
Food Services	Charbroiler	Crown Verity	MCB72
Food Services	Prep Table	Delfield	18660
Food Services	Prep Table	Delfield	4464N
Food Services	Food Well	Delfield	N8000
Food Services	Scale	Detecto	8852F
Food Services	Grill	Electrolux	603859
Food Services	Dispenser	Glastender	WT-5-SS
Food Services	Cooler	Glastender	BB 84
Food Services	Skillet	Groen	BPP
Food Services	Hood	Halton	KVE
Food Services	Slicer	Hobart	HS6
Food Services	Mixer	Hobart	HL200
Food Services	Mixer	Hobart	HL600
Food Services	Washer	Hobart	PW10
Food Services	Chiller	Irinix	MF
Food Services	Range	Jade	JBR Heavy Duty
Food Services	Range	Jade	JTRH Heavy Titan
Food Services	Range	Jade	JTRH Heavy Titan
Food Services	Range	Jade	JTRH Heavy Titan
Food Services	Range	Jade	JTRH Heavy Titan
Food Services	Broiler	Jade	JSB Salamander
Food Services	Broiler	Jade	JB Range Broiler
Food Services	Griddle	Jade	JGT
Food Services	Griddle	Jade	JGT
Food Services	Food Well	Low Temp	CFT Drop In Frost
Food Services	Food Well	Low Temp	CFT Drop In Frost
Food Services	Ice Machine	Manitowoc	Indigo
Food Services	Ice Machine Bin	Manitowoc	ICE BIN
Food Services	Hood Controls	Melink	
Food Services	Juicer	Omcan	Santos 68
Food Services	Fryolator	Pitco	SSHLV14

Food Services	Fryolator	Pitco	SSHLV14
Food Services	Fryolator	Pitco	SSHLV14
Food Services	Fryolator	Pitco	SSHLV14
Food Services	Display Case	Regal Pinnacle	VIAS Vienna (Refrigerated)
Food Services	Display Case	Regal Pinnacle	VIAS Vienna (Refrigerated)
Food Services	Display Case	Regal Pinnacle	VIAS Vienna (Refrigerated)
Food Services	Display Case	Regal Pinnacle	VIAS Vienna (Refrigerated)
Food Services	Display Case	Regal Pinnacle	VIHD Vienna Hot Display
Food Services	Display Case	Structural Concepts	CO3324R Oasis
Food Services	Reach In	Traulsen	UHT48
Food Services	Reach In	Traulsen	UHT48
Food Services	Reach In	Traulsen	UHT48
Food Services	Reach In	Traulsen	UHT60
Food Services	Reach In	Traulsen	UHT60
Food Services	Base	Traulsen	TEO (Refrigerated)
Food Services	Base	Traulsen	TEO (Refrigerated)
Food Services	Reach In	Traulsen	RIH232
Food Services	Reach In	True	STR
Food Services	Reach In	True	STR

Food Services	Oven	Turbo Chef	Sota Microwave
Food Services	Blender	Vitamix	36019 Quiet One
Food Services	Blender	Vitamix	36020 Quiet One
Food Services	Oven	Woodstone	WS-FD-8645
	Deli & Salad		
Food Services		T&S Brass	B-1123
Food Services		T&S Brass	B-1111

Food Services		Bobrick	B-822
Food Services		Bobrick	B-526

Food Services	Refrigerator	Delfield	UC4048P
---------------	--------------	----------	---------

Food Services	Refrigerator	Delfield	UCD446N-16
---------------	--------------	----------	------------

Food Services	Refrigerator	Delfield	UCD446N-16
Food Services	Worktable	SML	Custom
Food Services	Oven	Turbo Chef	i3 Microwave
Food Services	Oven	Turbo Chef	i3 Microwave

Food Services	<i>Spare Number</i>		
Food Services	Spare Number		
Food Services	Counter	SML	Custom
Food Services	Food Guard	BSI	Custom
Food Services	Food Guard	BSI	Custom
Food Services	Food Well	Low Temp	QSCHP-2 Drop In
Food Services	Food Well	Low Temp	DI-2063TA
Food Services	Drop-In	RPI Industries	VIAS2-27-R-SQ-SC-INS
Food Services	Hot Display	RPI Industries	VIHD2-34-R-SQ-CO
Food Services	Garbage Can	Rubbermaid	FG354060GRAY
Food Services	Garbage Can	Rubbermaid	FG354060GRAY
Food Services		Hearth	
Food Services	Work Counter	SML	Custom
Food Services	Prep Table	Delfield	18660PTBM
Food Services	Oven	Woodstone	FD-9660-RFGLR-IR
Food Services	Work Counter	SML	Custom
Food Services	<i>Spare Number</i>		
Food Services	Service Counter	SML	Custom
Food Services	Food Guard	BSI	Custom
Food Services	Food Guard	BSI	Custom
Food Services	Food Guard	BSI	Custom
Food Services	Food Guard	BSI	Custom
Food Services	Food Warmer	Hatco	GRSBF-48-S
Food Services	Food Warmer	Hatco	GRSBF-48-S
Food Services	<i>Spare Number</i>		

Food Services	Garbage Can	Rubbermaid	FG354060GRAY
Food Services	Garbage Can	Rubbermaid	FG354060GRAY
Food Services		Grill Area	
Food Services	Service Counter	SML	Custom
Food Services	Food Guard	BSI	Custom
Food Services	Food Guard	BSI	Custom
Food Services	Food Guard	BSI	Custom
Food Services	Food Well	Low Temp	QSCHP-2 Drop In
Food Services	Food Warmer	Hatco	GRSBF-48-S
Food Services	Food Well	Low Temp	QSCHP-3 Drop In
Food Services	<i>Spare Number</i>		
Food Services	<i>Spare Number</i>		
Food Services	Work Counter	SML	Custom
Food Services	Exhaust Hood	Halton	KVE
Food Services	Wall Cladding	SML	Custom
Food Services	Fire System	Ansul	R102
Food Services	Fryolator	Pitco	SSHLV14T-C/FD
Food Services	Oven	Blodgett	DFG-100 SGL
Food Services	Griddle	Jade	JGT-2436
Food Services	Griddle	Jade	
Food Services	Equipment Stand	Traulsen	TE072HT
Food Services	Charbroiler	Jade	JB-48
Food Services	Equipment Stand	Traulsen	TE048HT

Food Services	Range	Jade	JTRH-4-A
Food Services	Salamander Broiler	Jade	JSB-36WM
Food Services	<i>Spare Number</i>		
Food Services	Exhaust Hood	Halton	Custom
Food Services	Wall Cladding	SML	Custom
Food Services	Garbage Can	Rubbermaid	FG354060GRAY
Food Services	Fire System	Ansul	R102
Food Services	Range	Jade	JTRH-2
Food Services	Range	Jade	JTRH-2
Food Services	Entrée Area		
Food Services	Service Counter	SML	Custom
Food Services	Food Guard	BSI	Custom
Food Services	Food Guard	BSI	Custom
Food Services	Food Guard	BSI	Custom
Food Services	Food Well	Low Temp	QSCHP-2 Drop In
Food Services	Food Warmer	Hatco	GRSBF-48-S
Food Services	Food Well	Low Temp	QSCHP-3 Drop In
Food Services	<i>Spare Number</i>		
Food Services	Work Counter	SML	Custom
Food Services	Roll-In Cabinet	Traulsen	RIH232L-FHS
Food Services	Utility Rack	Cres-Cor	273-65-12/1818
Food Services	Utility Rack	Cres-Cor	273-65-12/1818
Food Services	Work Counter	SML	Custom
Food Services	Garbage Can	Rubbermaid	FG354060GRAY

Food Services	Freezer	Irinox	MF 70.1L
Food Services	Coffee Brewer	FETCO	CBS-52H-15
Food Services	Coffee Dispenser	FETCO	D049
Food Services	Salad Bar & Hot Entrees		
Food Services	Kiosk Ordering System		Custom NIC
Food Services	Kiosk Ordering System		Custom NIC
Food Services	Service Counter	SML	Custom
Food Services	Food Guard	BSI	Custom
Food Services	Food Guard	BSI	Custom
Food Services	Food Guard	BSI	Custom
Food Services	Food Well	Low Temp	DI-2063TA
Food Services	Food Well	Low Temp	DI-2063TA
Food Services	Food Well	Low Temp	DI-2063TA
Food Services	<i>Spare Number</i>		
Food Services	<i>Spare Number</i>		
Food Services	Food Well	SML	Custom
Food Services	Food Guard	BSI	Custom
Food Services	Food Guard	BSI	Custom
Food Services	Food Guard	BSI	Custom
Food Services	Food Warmer	Hatco	GRSBF-48-S
Food Services	Food Warmer	Hatco	GRSBF-48-S
Food Services	Food Well	Low Temp	QSCHP-2 Drop In

Food Services	Food Well	Low Temp	QSCHP-2 Drop In
Food Services	Food Well	CookTek	659801
Food Services	Food Well	CookTek	659801
Food Services	Food Well	CookTek	659801
Food Services	Check Out - Dessert - Snacks		
Food Services	Cashier Counter	SML	Custom
Food Services	Cashier Counter	SML	Custom
Food Services	Cashier Counter	SML	Custom
Food Services	POS System		Custom NIC
Food Services	POS System		Custom NIC
Food Services	POS System		Custom NIC
Food Services	POS Printer		Custom NIC
Food Services	POS Printer		Custom NIC
Food Services	POS Printer		Custom NIC

Food Services	Refrigerator	TRUE	STR2R-4HG
Food Services	Service Counter	SML	Custom
Food Services	Freezer		
Food Services	PI Bar		
Food Services	Work Counter	SML	Custom

Food Services	Microwave	Turbo Chef	Sota Microwave
---------------	-----------	------------	----------------

Food Services	Grill	Electrolux	603859
---------------	-------	------------	--------

Food Services	Food Well	CookTek	659801
---------------	-----------	---------	--------

Food Services	Food Well	Low Temp	QSCHP-1
---------------	-----------	----------	---------

Food Services	Refrigerator	Delfield	UC4048
Food Services	Blender	Vitamix	36019 Quiet One
Food Services	Blender	Vitamix	36019 Quiet One
Food Services	Freezer		
Food Services	Juicer		
Food Services	Food Guard	BSI	Custom
Food Services	Display Case	RPI Industries	VIAS3-34-R-SQ-SC-IS
Food Services	Display Case	RPI Industries	VIAS3-34-R-SQ-SC-IS
Food Services	Freezer	Delfield	407
Food Services	Display Case	Structural Concepts	CO3324R-UC Oasis
Food Services	Ice Bin	Glastender	IBB-18
Food Services	POS System		Custom
Food Services	POS Printer		Custom
Food Services	Garbage Can	Rubbermaid	FG354060GRAY
Food Services	Garbage Can	Rubbermaid	FG354060GRAY
Food Services	Cooler	Glastender	BB84BW
Food Services	Refrigerator		
Food Services	Service Counter	SML	Custom

Food Services	Beer/Wine Dispenser	Glastender	WT-5-SS
Food Services	Beer/Wine Dispenser	Glastender	WT-5-SS
Food Services	Beer/Wine Dispenser	Glastender	WT-5-SS
Food Services	Beer/Wine Dispenser	Glastender	WT-5-SS
Food Services	Beer/Wine Dispenser	Glastender	WT-5-SS
Food Services	Drip Trough	Glastender	DI-DR36
Food Services	Work Counter		
Food Services	Beverage & Condiments		
Food Services	Condiment Counter		Custom NIC
Food Services	Condiment Counter		Custom NIC
Food Services	Condiment Counter		Custom NIC
Food Services	Condiment Counter		Custom NIC
Food Services	Beverage Dispenser		Custom NIC
Food Services	Beverage Dispenser		Custom NIC
Food Services	Beverage Dispenser		Custom NIC
Food Services	Beverage Dispenser		Custom NIC
Food Services	Coffee Machine		Custom NIC
Food Services	Coffee Machine		Custom NIC
Food Services	Milk Dispenser		Custom NIC
Food Services	Condiment Dispenser		Custom NIC
Food Services	Water Filtration System	Everpure	EV943711
Food Services	Outdoor Grill		
Food Services	Service Counter	SML	Custom
Food Services	Food Guard	BSI	Custom
Food Services	Food Guard	BSI	Custom
Food Services	Food Guard	BSI	Custom
Food Services	Food Guard	BSI	Custom

Food Services	Garbage Can	Rubbermaid	FG354060GRAY
Food Services	Garbage Can	Rubbermaid	FG354060GRAY
Food Services	Refrigerator	Delfield	UC4048
Food Services	Refrigerator	Delfield	UC4049
Food Services	Oven	Alto-Shaam	750-S
Food Services	Oven	Alto-Shaam	750-S
Food Services	Oven	Alto-Shaam	750-S
Food Services	POS System		Custom NIC
Food Services	POS System		Custom NIC
Food Services	POS Printer		Custom NIC
Food Services	POS Printer		Custom NIC
Food Services	<i>Spare Number</i>		
Food Services	Work Counter	SML	Custom
Food Services	Outdoor Grill	Crown Verity	MCB-72RDP-NG
Food Services	Work Counter	SML	Custom
Food Services	Food Warmer		
Food Services	Food Well		
Food Services	Frost Top		
Food Services	Receiving & Storage		
Food Services	Cooler	American Panel	Custom
Food Services	Cooler Safety Flooring	Titan	Custom
Food Services	Evaporator	AMCO	Custom
Food Services	Evaporator	AMCO	Custom
Food Services	Evaporator	AMCO	Custom
Food Services	Evaporator	AMCO	Custom
Food Services	Dunnage Rack	Metro	HP2248PD
Food Services	Dunnage Rack	Metro	HP2248PD

Food Services	Dunnage Rack	Metro	HP2248PD
Food Services	Dunnage Rack	Metro	HP2248PD
Food Services	Dunnage Rack	Metro	HP2248PD
Food Services	Dunnage Rack	Metro	HP2248PD
Food Services	Dunnage Rack	Metro	HP2248PD
Food Services	Dunnage Rack	Metro	HP2248PD
Food Services	Pan Rack	New Age	4330
Food Services	Pan Rack	New Age	4330
Food Services	Pan Rack	New Age	4330
Food Services	Pan Rack	New Age	4330
Food Services	Pan Rack	New Age	4330
Food Services	Pan Rack	New Age	4330
Food Services	Pan Rack	New Age	4330
Food Services	Worktable	SML	Custom
Food Services	Scale	Detecto	8852F-204
Food Services	Shelving Units	Metro	METRO MAX Q
Food Services	Shelving Units	Metro	METRO MAX Q
Food Services	Bag N Box Soda System		Custom NIC
Food Services	Carbonator		Custom NIC
Food Services	CO2 Tank		Custom NIC
Food Services	CO2 Tank		Custom NIC
Food Services	Refrigeration Rack	AMCO	Custom
Food Services	Can Rack	Advance Tabco	CR10-162
Food Services	Prep Area		
Food Services	Worktable	SML	Custom

Food Services	Shelf	SML	Custom
Food Services	Shelf	SML	Custom
Food Services	Equipment Stand	Advance Tabco	AG-MT-242
Food Services	Slicer	Hobart	HS6-1
Food Services	<i>Spare Number</i>		
Food Services	<i>Spare Number</i>		
Food Services	<i>Spare Number</i>		
Food Services	<i>Spare Number</i>		
Food Services	<i>Spare Number</i>		
Food Services	Equipment Stand	Advance Tabco	AG-MT-242
Food Services	Mixer	Hobart	HL200C-1STD
Food Services	Mixer	Hobart	HL600-1STD
Food Services	Worktable	SML	Custom
Food Services	Shelf	SML	Custom
Food Services	Shelf	SML	Custom
Food Services	Hand Sink	Advance Tabco	7-PS-79
Food Services	Utility Chase	SML	Custom
Food Services	<i>Spare Number</i>		
Food Services	<i>Spare Number</i>		
Food Services	Ingredient Bin	Rubbermaid	FG360088WHT
Food Services	<i>Spare Number</i>		
Food Services	<i>Spare Number</i>		
Food Services	<i>Spare Number</i>		
Food Services	Commercial Waste Container	Rubbermaid	FG263200GRAY
Food Services	Commercial Waste Container	Rubbermaid	FG263200BLUE
Food Services	Bulk Cooking		
	Hand Sink	Advance Tabco	7-PS-79
	Hand Sink	Advance Tabco	7-PS-79