

Town of Natick

Department of Public Works



Capital Requests 2020 STM#1

September 29, 2020



Police Cruiser Replacement

Over 100,000 miles at replacement

Two Police Interceptors

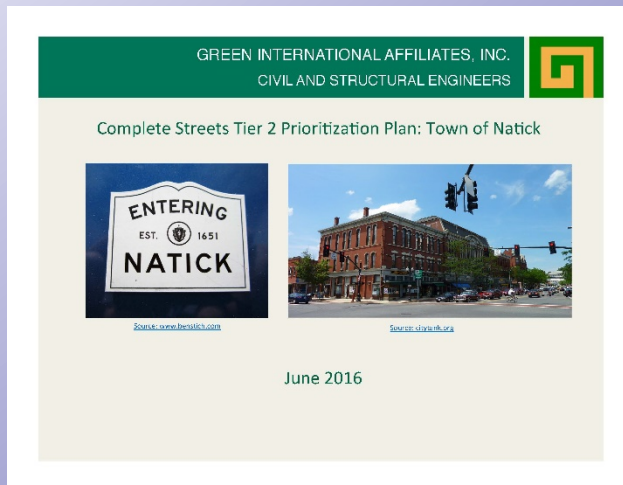




Complete Streets Priority Plan

- Update of Complete Streets Priority Plan by consultant
- Basis of grant funding from MassDOT
- Natick has received over \$640,000 through this program

www.natickma.gov/1331/Complete-Streets



TOWN OF NATICK COMPLETE STREETS POLICY

Vision and Purpose:

Complete Streets are designed and operated to provide safety and accessibility for all the users of our roadways, trails and transit systems, including pedestrians, bicyclists, transit riders, motorists, commercial vehicles, and emergency vehicles and for people of all ages and abilities. Furthermore, Complete Streets principles contribute toward the safety, health, economic viability, and quality of life in a community by providing accessible and efficient connections between home, school, work, recreation and retail destinations by improving the pedestrian and vehicular environments throughout communities. The purpose of Natick's Complete Streets policy, therefore, is to accommodate all road users by creating a road network that meets the needs of individuals utilizing a variety of transportation modes. It is the intent of the Town of Natick to formalize the planning, design, operation and maintenance of streets so that they are safe for all users of all ages and abilities as a matter of routine. This policy directs decision-makers to consistently plan, design, and construct streets to accommodate all anticipated users including, but not limited to pedestrians, bicyclists, motorists, emergency vehicles, and freight and commercial vehicles.

Core Commitment:

The Town of Natick recognizes that users of various modes of transportation, including, but not limited to, pedestrians, cyclists, transit and school bus riders, motorists, delivery and service personnel, freight haulers, and emergency responders, are legitimate users of streets and deserve safe facilities. "All Users" includes users of all ages and abilities.

The Town of Natick recognizes that all projects, new, maintenance, or reconstruction, are potential opportunities to apply Complete Streets design principles. The Town further recognizes that many Natick roads are substandard, unaccepted, scenic, and/or constrained by natural features or other limitations. The Town will, to the maximum extent practical, design, construct, maintain, and operate all streets to provide for a comprehensive and integrated street network of facilities for people of all ages and abilities.

Complete Streets principles and design elements shall be considered for all publicly and privately funded projects, and incorporated as appropriate. All transportation infrastructure and street design projects requiring funding or approval by the Town of Natick, as well as projects funded by the state and federal government, such as the Chapter 90 funds, Town Improvement grants, Transportation Improvement Program (TIP), the MassWorks Infrastructure Program, Community Development Block Grants (CDBG), Capital Funding and other state and federal funds for street and infrastructure design shall adhere to (comply with) the Town of Natick Complete Streets Policy.



Grove Park Retaining Wall

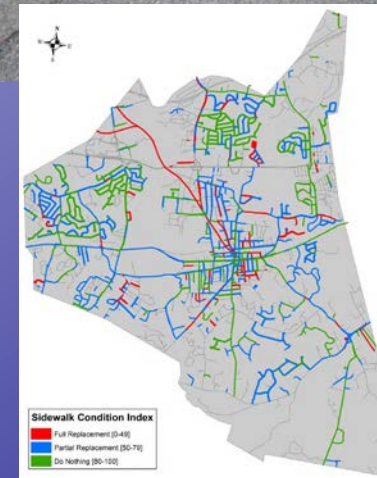
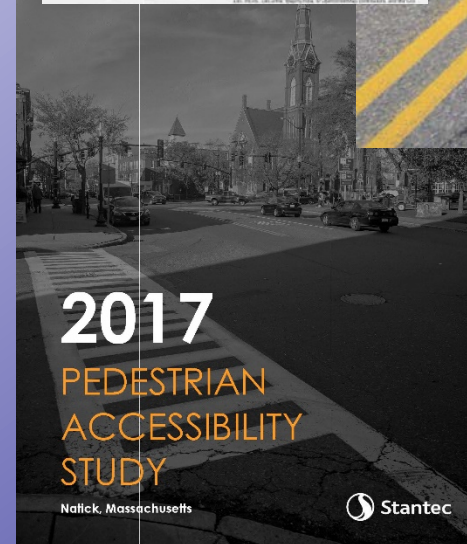
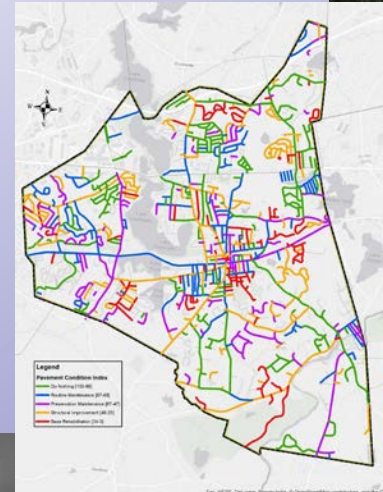
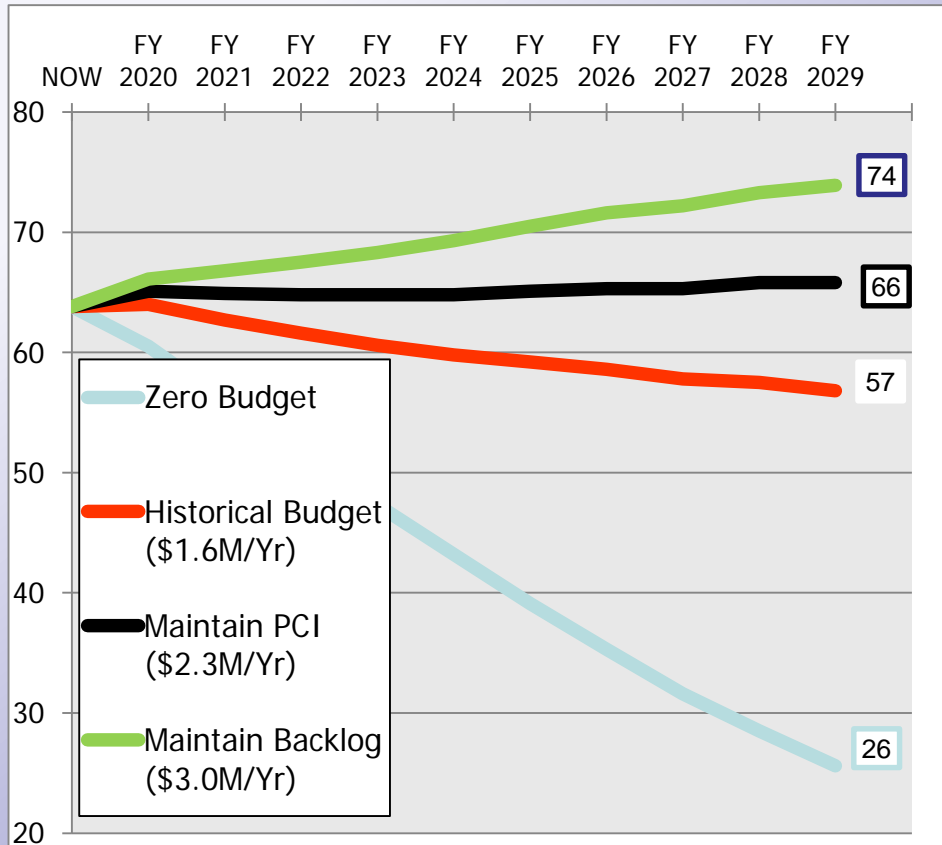
- Failed Stone Retaining Wall
- Supports Eliot Street at Grove Park (South Natick Dam)
- Structural Evaluation and Design Funding





Roads and Sidewalks

- Supplement to Chapter 90 Funding
- Annual Roadway Improvement Contract
- Five Year Roadway Improvement Plan





Guardrails (Various Locations)

- Replace Damaged and Deficient Guardrail at various locations





Replace Dumpsters

- Dumpsters at 12 Municipal Buildings/Sites and at all Public Schools
- Existing inventory of 60 total Containers – from 2 cy to 30 cy in size
- For collection of Solid Waste, Cardboard, SS Recycling
- Replacement costs range from \$2,200 to \$6,400 per dumpster (requested funding would replace 2 to 4 containers)





Per-Ride Assessment Funds

- Annual Disbursement from Department of Public Utilities of per-ride assessment funds (e.g. Uber/Lyft)
- Natick's 2019 Assessment was \$24,984.90
 - \$0.20 per-ride on rides originating in Natick
- Appropriate at Town Meeting for transportation related projects (roadway repair)



Tree Inventory

- Continue inventory of public shade trees and trees of significance
- Aids in assessment of risk and mitigation of risk
- Estimate of 8,000 public shade trees townwide

<https://www.natickma.gov/1560/Public-Tree-Inventory>

TOWN OF NATICK, MA
Tree Details for Redwood-Dawn (Tree ID 43)

TREE DETAILS	
Common name:	Redwood-Dawn
Scientific name:	<i>Metasequoia glyptostroboides</i>
Height class:	Large
Diameter at breast height:	38 in.
Age class:	Mature
Canopy radius:	30 ft.
Condition:	Good
Tree Asset Value:	\$29,159.39
Location Information:	View

TREE INFO

RECOMMENDATIONS

RISK

TREE OBSERVATIONS

ADDITIONAL INFO

Cumulative Asset Value of All Inventoried Trees
\$3,971,984.55

Filter Options
[Filter Trees](#) [Reset](#)
Street Address:
[Go To Address](#) [My Location](#)

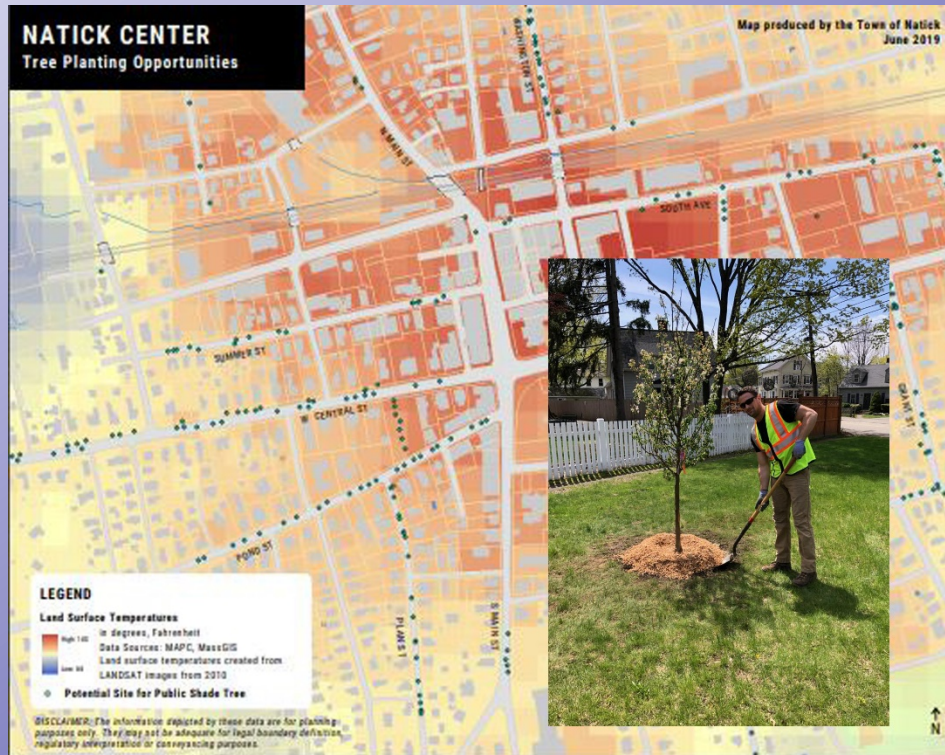
View Tree ID: [Go](#)
[Map View](#)
[Help](#)



Tree Replacement

- Continue Public Shade Tree Planting
- 30-50 Hazard Trees removed per year (will increase)
- Goal is to exceed removal numbers - planted 50 new trees in 2016

<https://www.natickma.gov/1637/Strategic-Tree-Planting-Program>





Park and Field Renovations

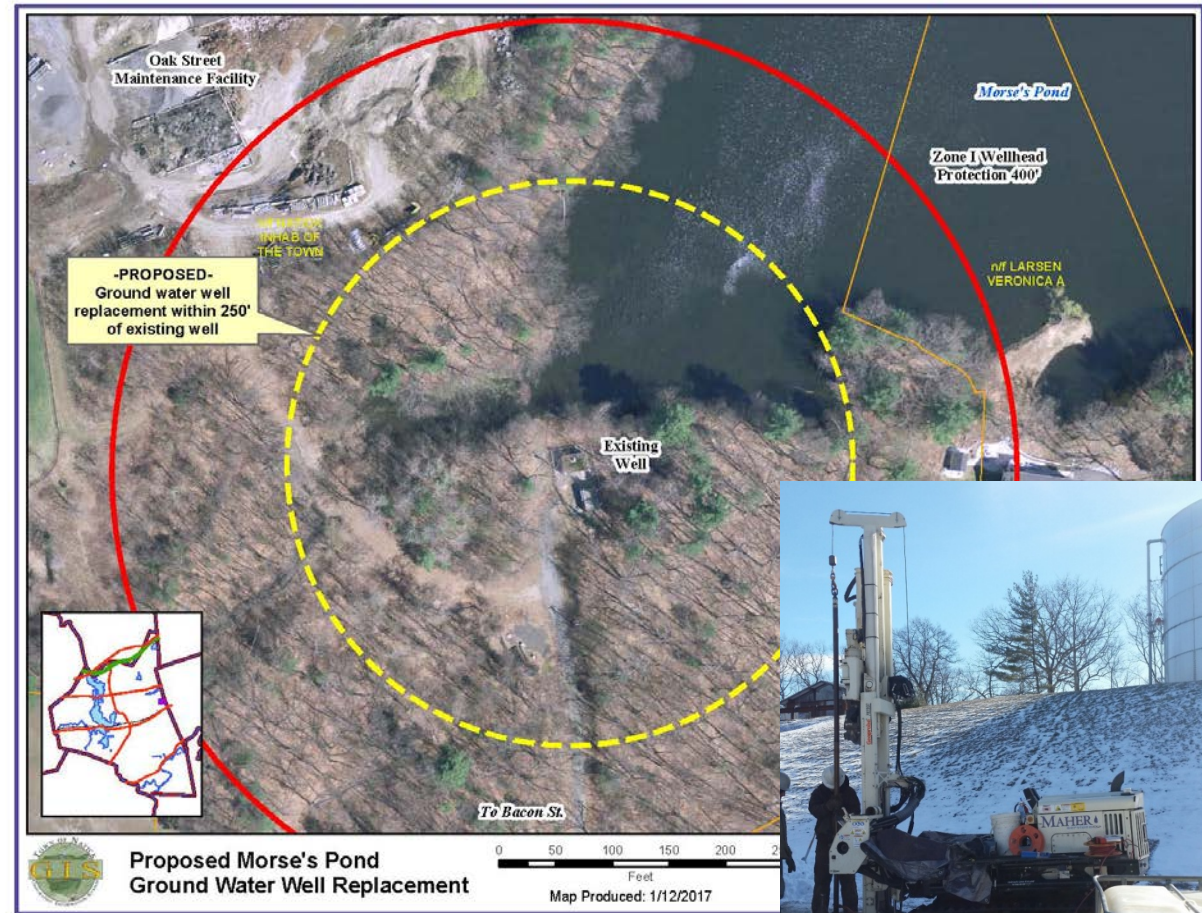
- Memorial School Field - Infield Renovations and Laser Grading
- Hunnewell Complex— Backstop and Fencing
- Memorial Stadium - Lighting Automation and Repairs





Replace Ground Water Wells

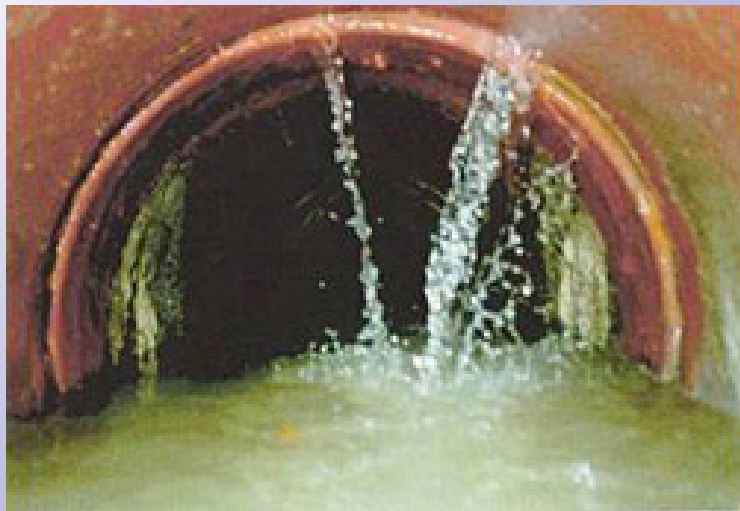
- Multi-phase project to rehabilitate and replace Town's water supply wells
- Current request would provide funds for Evergreen #3 and to installation of piping and mechanical building for the Morse Pond Supply Well





Sewer Collection System Repairs

- Structural repair of Sewer Manholes and Mains
- Reduce and Remove Infiltration and Inflow (I&I)
- Successfully removed 1.42 MGD of I&I since 1997
- MWRA Assessment \$5.5 Million





MWRA I&I Removal Program

- Structural repair of Sewer Manholes and Mains
- Reduce and Remove Infiltration and Inflow (I&I)
- Successfully removed 1.42 MGD of I&I since 1997
- MWRA Assessment \$5.5 Million





Water Distribution System Enhancements

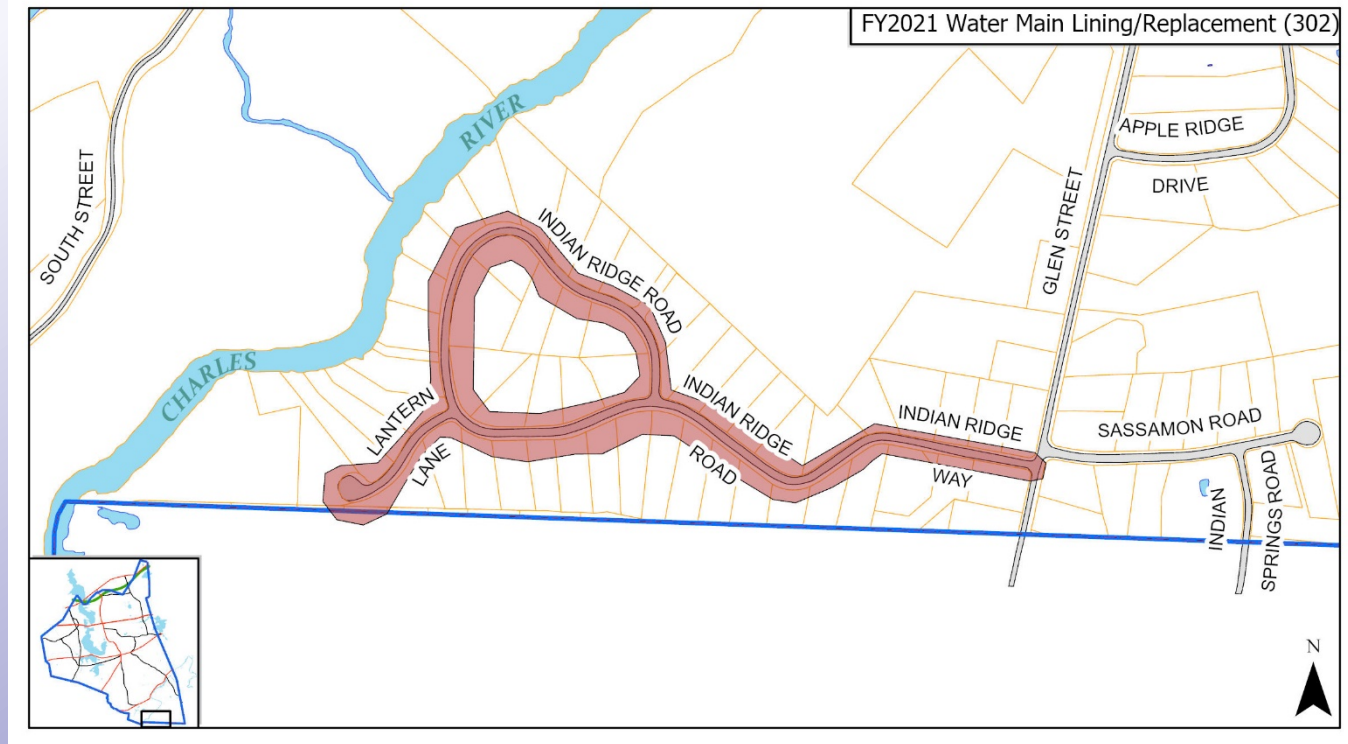
- Repair and Replacement of Water Distribution Infrastructure
- Repair broken gate valves and insert additional valves - Townwide
- Repair and Replacement Fire Hydrants Townwide (20 hydrant replacements planned for FY21)





Water Main Relining / Replacement

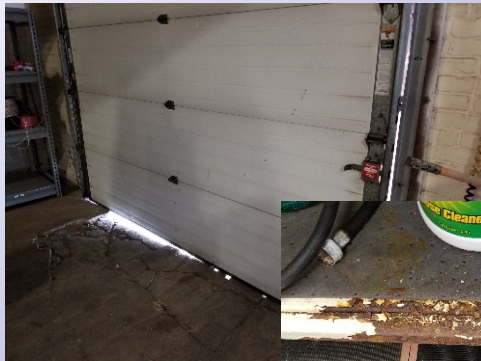
- Replace 5,240 feet of existing 8" dia water main
 - Indian Ridge Road
 - Lantern Lane
- Existing 'thin-walled' cast iron pipe
- History of breaks
- Services 50 Residential Homes





High Lift and H&T Building Modifications and Repairs

- Repair and Rehabilitate Interior and Exterior of Buildings
- Floor coatings, wall panels, ceiling systems, heating
- Increase security, efficiency, and reliability
- Primary Drinking Water Source





Springvale WTF Air Stripper Media Replacement

- Two air stripping towers
- Removes potential contaminants such as volatile organic compounds (VOC's)
- Helps oxidize and remove iron and manganese
- Helps adjust water pH





Replace Vehicle 606 (W-17)

F-450 w/ Crane

Replacement of 2009 Ford F450 Utility Body w/ Crane and snow plow

Vehicle will be over 12 years old at time of replacement

Mechanical Issues

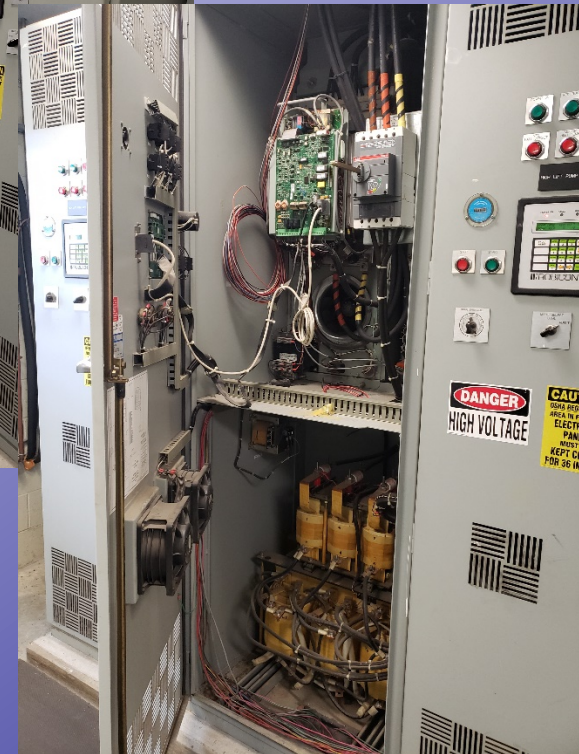




Variable Frequency Drives for Water Pumps

Over 100,000 miles at replacement

Two Police Interceptors





Replace Vehicle 609 (W-21) Water Call Truck

Replacement of 2015 Ford
F350 Utility Body w/ lift gate
and snow plow

Vehicle will be over 6 years
old at time of replacement

Mechanical Issues



Thank You for Your Continued Support !



Celebrating 100 Years in 2021