

Safer Streets for All:
A Community Forum
January 26, 2021

Speed Limit Legislation

A New Way to Reduce Municipal Speed Limits

Then

- Street-by-street; state approval needed with a speed study

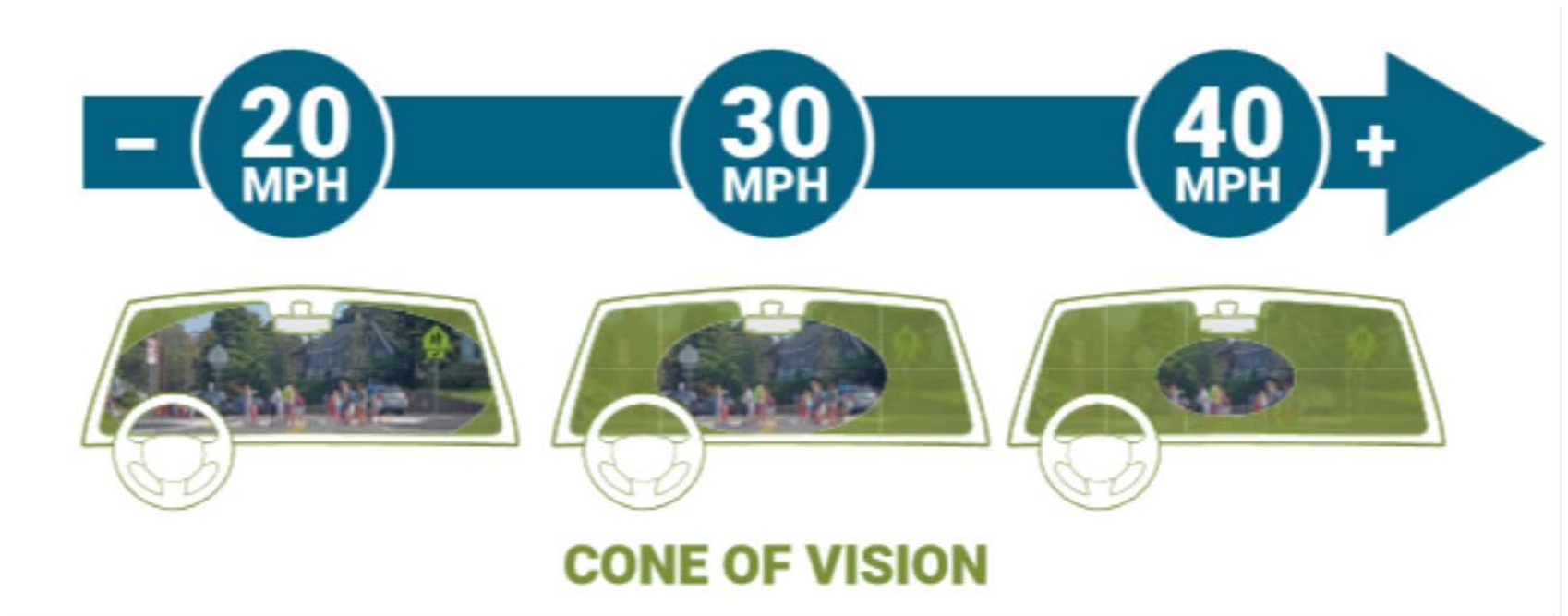
Now

- Enacted in 2016 and accepted by 51 cities and towns to date
- MGL c. 90 § 17C allows cities and towns to reduce the statutory speed limit from 30 mph to 25 mph in thickly settled or business districts
- MGL c. 90 § 18B allows cities and towns to establish designated safety zones with a speed limit of 20 mph

Why reduce vehicle speeds? Safety.



Higher speed = lower driver reaction time and longer stopping distances

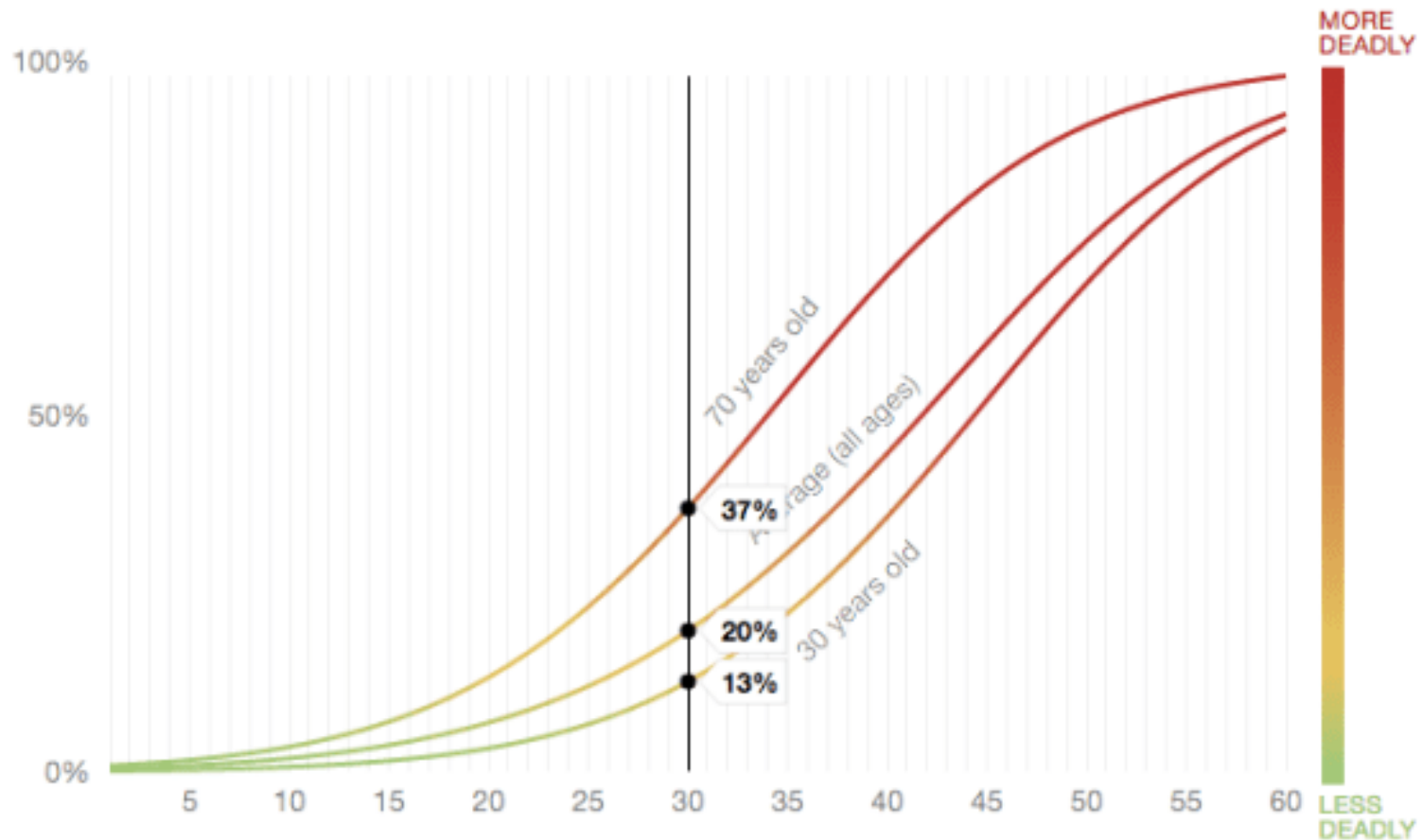


Fairfax County, VA

Older adults are at highest risk

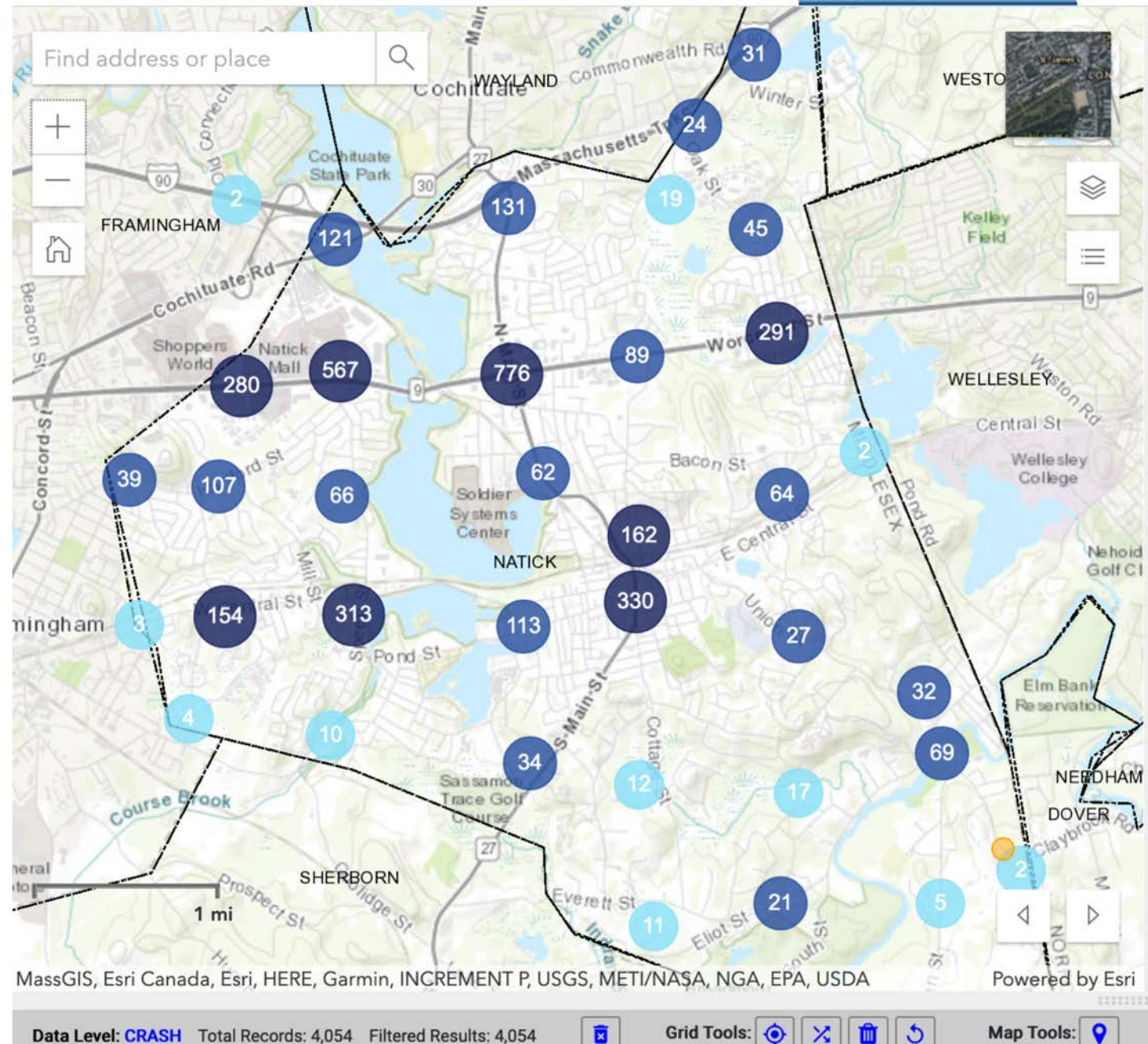
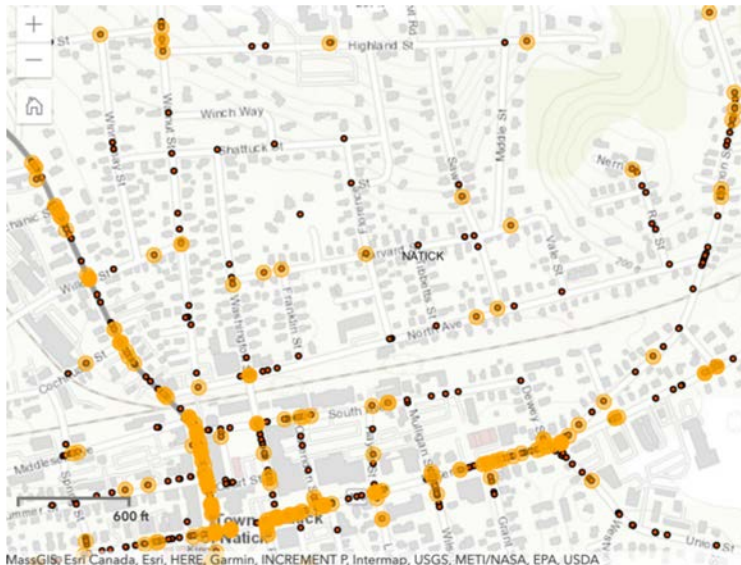
The Chance of Being Killed by a Car Going 30 mph

Roll over the curved lines to see the risk at any speed



AAA Safety Foundation

Accidents
don't "just
happen" –
there are
many factors



MassDOT Crash Data

Speed Limits Are Only Part of the Solution

Engineering

- Designing streets to reduce speeds and increase safety, and provide safe, convenient alternatives to driving

Education

- Ensure that roadway users are aware, alert and observe traffic laws

Enforcement

- Police resources are limited, and traffic is just one of many duties

Public Engagement is Critical

We must explain...

- **Why** we are doing this
- **How fast** is reasonable and proper
- **Where** are lower speed limits appropriate

Accepting this legislation is one of the first steps to a long-term solution. Natick is among many communities seeking safer streets through multiple means.

Cities/Towns opting in to Ch. 90 § 17B/18C

Municipality	Opt-In Date	Area(s) Covered		Municipality	Opt-In Date	Area(s) Covered		Municipality	Opt-In Date	Area(s) Covered
Arlington	5/1/17	Townwide		Framingham	3/21/19	Citywide		Milton	4/5/18	Townwide
Bedford	4/20/18	Townwide		Georgetown	5/16/19	Townwide		Nantucket	6/21/17	Townwide
Belmont	10/11/17	Townwide		Greenfield	5/15/19	Citywide		Newton	3/13/17	Citywide
Beverly	3/17/17	Citywide		Halifax	10/12/17	Selected streets		Norwell	2/19/20	Townwide
Billerica	8/23/17	Selected streets		Hanover	2/7/19	Townwide		Pittsfield	9/5/17	Citywide
Boston	1/9/17	Citywide		Holliston	5/7/20	Townwide		Plainfield	8/13/19	Townwide
Boxborough	5/16/19	Townwide		Holyoke	10/10/18	Citywide		Randolph	3/27/17	Townwide
Braintree	10/7/17	Townwide		Ipswich	6/12/18	Townwide		Revere	6/1/17	Citywide
Brookline	4/18/18	Townwide		Leominster	4/17/17	Selected streets		Salem	3/22/17	Citywide
Cambridge	11/7/16	Citywide		Lexington	5/12/17	Townwide		Scituate	4/5/17	Townwide
Chelsea	1/4/17	Citywide		Ludlow	10/5/20	Townwide		Somerville	10/25/16	Citywide
Chicopee	10/10/17	Citywide		Lunenburg	1/17/18	Townwide		Springfield	10/15/17	Citywide
Concord	1/2/19	Townwide		Lynn	5/22/17	Citywide		Stoneham	11/9/17	Townwide
Danvers	3/8/18	Selected streets		Malden	4/23/18	Citywide		Sudbury	10/15/18	Townwide
Dedham	2/16/17	Townwide		Mattapoissett	9/10/19	Townwide		Swampscott	11/2/17	Townwide
Duxbury	2/10/20	Selected streets		Medford	5/30/17	Citywide		Weston	9/10/18	Townwide
East Bridgewater	7/6/20	Townwide		Melrose	6/21/17	Citywide		Winchester	9/23/19	Townwide

Legislative Process

- Town Meeting acceptance of statute(s)
- Select Board designation of selected streets (or implement this Town wide) for 25 mph limits, and of designated safety zones, with Safety Committee and public input
- MassDOT notification
- Amend existing regulations for speed limits on Town roads, if needed

Town-wide, or by street/neighborhood?

- Legislative acceptance is the first step
- If Town Meeting accepts: Safety Committee and Transportation Advisory Committee discussions with public input about where this is appropriate, considering tradeoffs and benefits
- Select Board decision on where and when to implement reduced speed limits
- Consideration of streets that have non-standard speed limits through previous Town/State action

Existing Town Speed Limits Set by Regulation

Bacon Street	25/20/35 mph	1975
Cochituate Street	25 mph	1996
East/West Central	30/35/40/45 mph	1976
Elliot Street	25/35/40 mph	1974
Oak Street	25/20/35 mph	1975
Pleasant Street	25/30/35 mph	1974
Speen Street	25/35/40 mph	1995
Walnut Street	25/35 mph	1996
Washington Avenue	20/30 mph	1969

- State-controlled roads are excluded (Routes 9 and 90)

Questions and Comments